



2025

IRISH COUNTRY HOUSES,  
HISTORIC HOTELS  
& RESTAURANTS





G I F T  
V O U C H E R

GIFT AN UNFORGETTABLE  
EXPERIENCE.

---

Mark birthdays, weddings, corporate rewards,  
or any of life's special occasions with an  
Ireland's Blue Book Gift Voucher.

---



TO ORDER AN IRELAND'S BLUE BOOK  
GIFT VOUCHER

Please visit [www.irelandsbluebook.com](http://www.irelandsbluebook.com)  
or call +353 (0)1 676 9914

---

## Céad Míle Fáilte to the 2025 edition of Ireland's Blue Book

Welcome, fáilte, bienvenue, willkommen,  
benvenuto, bienvenida, 欢迎, ようこそ

---

Welcome to the 2025 edition of Ireland's Blue Book.

Firstly, to you our customers and guests, we would like to express our sincerest gratitude and thanks for your loyalty and patronage, without you we would not be here.

Founded in 1974, Ireland's Blue Book is an association comprising of the finest manor houses, castles, and historic hotels together with esteemed restaurants, all over the island of Ireland. Every property offers something special within its own unique setting.

For those of you seeking a scenic retreat or a gourmet getaway, you will find somewhere perfect in our collection. For a more activity-driven holiday, we have fishing, golf, cycling and equestrian pursuits. Or if you would rather be pampered, Ireland's Blue Book features indulgent spas and wellness centres.

Why not combine business with pleasure and book your corporate occasions with us too? We have venues to cater for events of all tastes and sizes.

For our 2025 edition, we are honoured to welcome two new properties to our collection, Dromoland Castle in Clare and The Station House Hotel in Meath.

We are delighted to have them as part of the Blue Book Family.

On behalf of the Blue Book properties, may I wish you all the very best for 2025.

We look forward to welcoming you soon.

*Marcus Roulston*

**Marcus Roulston**  
Chairperson of Ireland's Blue Book



# HOW TO BOOK A BLUE BOOK PROPERTY

---

Visit Ireland's Blue Book website to make your reservation/ booking.

Perhaps you would prefer to book directly with the property of your choice?

If so, simply contact your chosen property directly where a member of staff would be delighted to assist you.

## Using a Blue Book Gift Voucher?

There is no need to use your Blue Book Gift Voucher code when making a reservation.

Just present your voucher upon checkout.



At the bottom of each page you will find the proprietor's name, address, telephone, email, and website.

Reservations can also be made through your travel agent.





Delicious local food and the warmest of welcomes await you in this family run hotel in the Heritage seaside town of Youghal. Explore the Blackwater Valley, hidden coves and unspoilt beaches.

Aherne's use the freshest local produce – the finest fish/shellfish in Youghal harbour, seasonal local vegetables, herbs from their own garden and delicious home baked breads/desserts. Gluten-free meals have been served for 40 years.

Youghal is a coastal gem and steeped in history of Ireland's ancient east. Enjoy cycling the Youghal/Midleton greenway and Waterford greenway. Swim in the sea on our blue flag beaches and stroll our boardwalk.

Embrace the outdoors along the fabulous cliffs in Ardmore/Ballycotton and Knockadoon Head or hike up the Comeraghs or The Vee Gap.

Visit Spike Island, Fota Wildlife Park, Cobh Queenstown Story, Jameson Distillery Midleton, Blackwater Distillery.

## Bedrooms 13

Guesthouse ★ ★ ★ ★

### Aherne's, 163 North Main Street, Youghal, Co.Cork P36 Y003

T +353 (0)24 92424

info@ahernes.net

www.ahernes.net for opening hours

#### Proprietor: The FitzGibbon Family

Open Wed – Sun all year round, Open Bank Holidays.

Closed for November and Christmas.

Bed & Breakfast from €90 – €250 pps.

Single from €120 – €200.

Dinner from €30.00.

Guide dogs welcome.

A Blue Book Voucher – complimentary upgrade where possible.

#### How to find:

**Cork:** 30 mins (N25 Direction Rosslare)

**Rosslare:** 1.45hrs (N25).

**Dublin:** Take the N7 then the M7 onto the M9 to Waterford then take the N25 West to Youghal. 2.30hrs.

#### GPS coordinates

Lat: 51.957031634671

Long: -7.8518871130346





Nestling among extensive gardens, millponds and woodland in the heart of Northern Ireland lies Ardtara, an elegant Victorian mansion steeped in the history of linen production, synonymous with the locale, now home to one of the finest restaurants in Ireland.

Within 45 minutes of Belfast, Derry city, Royal Portrush and Portstewart golf clubs and the Antrim Coast, this quintessential country house offers the perfect base from which to explore. Each of the 9 bedrooms are uniquely styled in keeping with the original charm of the house, offering refined elegance alongside all the modern conveniences.

Using fruit and vegetables from our own gardens and the best of local produce, our award-winning restaurant serves sumptuous afternoon tea, stunning Sunday lunch, exquisite dinners and a casual bar menu, with an enviable wine and cocktail selection.

**Tripadvisor** – Top 20 best small hotels in Europe 2023. **Restaurant Association of Ireland** – best hotel/guesthouse 2022. **AA** – 2 Rosette restaurant. Breakfast Award 2023. Best guest accommodation Northern Ireland.

**Bedrooms 9**

**Listed Heritage Property**

**Guesthouse ★ ★ ★ ★**

**Ardtara Country House & Restaurant,  
8 Gortead Road, Upperlands,  
Co. L'Derry BT46 5SA**

T +44 (0)28 796 44490

info@ardtara.com

www.ardtara.com

**Proprietors: Roulston & Orr Families**

Open all year round.

House available for private hire.

Bed & cooked breakfast from £164.

Afternoon Tea, Dinner & Sunday Lunch available to all by reservation.

Dinner 5.30 – 9.00pm a la carte.

Private dining room available by reservation.

**How to find:**

Take M2/M22/A6 north toward Derry/Londonderry. 7 miles past the Castledawson roundabout, take A29 through Maghera. Continue on A29 towards Coleraine for three miles out of Maghera to the right turn on to B75. Proceed one mile into Upperlands. Ardtara sign is on the left towards the end of the village.

**GPS coordinates**

N 54.88297

W -6.636611





At the foot of the Slieve Bloom Mountains, just over an hour from Dublin, Ballyfin has long been admired as the most lavish Regency mansion in Ireland.

Decorated with Irish art and antiques from around the world, the interiors offer the same spirit of refined elegance that the early House reflected in the 1820s.

With just 20 bedrooms and a one bedroom Gardener's Cottage, Ballyfin has the flavour of a grand private house with the facilities of a five-star resort.

Enjoy 614 acres of private parkland, 28-acre lake, ancient woods and follies, indoor swimming pool, gym and treatment rooms. A range of experiences are available such as coarse fishing, clay shooting, horse riding, falconry, and wine and whiskey tasting.

**Travel and Leisure:** Awards 2024 #1 Resort Hotel in UK & Ireland

**Georgina Campbell:** 5 star – Hotel of the Year 2023

**Conde Nast:** Readers Choice Awards, 2017, 2018, 2019, 2020, 2021, 2022, 2023.

Bedrooms **20** and Gardener's Cottage

Hotel ★ ★ ★ ★ ★

**Ballyfin Demesne**  
**Ballyfin, Co.Laois R32 X5X8**  
 +353 (0)57 875 5866  
 reservations@ballyfin.com  
 www.ballyfin.com

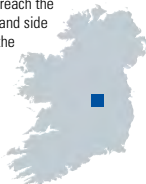
**General Manager: Peter White**  
 Rates:  
 From €850 Bed & Breakfast  
 From €1,180 Gourmet Escape inclusive package.

#### How to find:

Ballyfin is located 10 minutes drive from Junction 18 of the M7 motorway. Leave the motorway at junction 18 signposted Tullamore and Mountrath. Follow signs for Mountrath, on entering Mountrath turn right at the traffic lights/T-junction. Continue along this road to Ballyfin for approx 7.5km and you will reach the entrance gate on the left hand side signposted Ballyfin. Press the intercom at the gate for reception.

#### GPS coordinates

Latitude 53° 03' .666N  
 Longitude 007° 25' .134W



# BALLYMALOE HOUSE HOTEL

COUNTRY HOUSE &  
RESTAURANT

4



Nestled within 300 acres of farmland and gardens and built onto a 15th-century Norman Castle, Ballymaloe House is Ireland's original country house hotel, offering a serene escape from urban life. Located only minutes from the picturesque south coast, yet only 32km from Cork City and the airport.

The Allen family have been welcoming guests since 1964, and the land still provides the main ingredients for the restaurant. The bedrooms are charming and elegant, and the house has a luxuriously relaxed atmosphere. Guests are invited to join complimentary tours of the house or grounds, stroll the farm and enjoy woodland walks, dip in the summer outdoor pool, play croquet, or simply immerse themselves in culinary delights and tranquillity.

Ballymaloe House Hotel is a culinary country haven; a blend of historic charm the luxury of a relaxed pace, and authentic Irish hospitality with deep-rooted sustainable principles.

Awards include: Best Hotel in Ireland 2024, awarded by **Good Hotel Guide**, Culinary Haven of the Year 2023, **Good Food Ireland**, Best Sustainable Business Innovation Award 2023, awarded by **Cork Business Association**.

**Bedrooms 32**

**Hotel ★ ★ ★ ★**

## **Ballymaloe House Hotel, Shanagarry, Co.Cork, P25 Y070**

T +353 (0)21 465 2531

info@ballymaloehouse.com

www.ballymaloe.ie

Instagram: Ballymaloe\_House

Facebook: Ballymaloe

### **Proprietors: The Allen Family General Manager: Laura Behan**

Closed: Over Christmas and from 2nd January to 14th February 2025.

Dinner, Bed and Breakfast from €265 per person sharing.

Lunch: Light conservatory a la carte menu.

Monday – Saturday, Sunday lunch, 3-course €65pp.

Dinner: 5-course menu, Monday to Saturday €100pp, 4-course menu on Sunday €85pp.

### **How to find:**

Follow for Eircode: P25 Y070

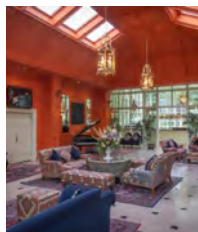
Tesla & General Electric car chargers available.

### **GPS coordinates**

Latitude: 51.865083

Longitude: -8.075021





Barberstown Castle is a Country House Hotel & Historic 13th Century Castle, Known as the "hidden gem" in the village of Straffan, Co Kildare. It was a former home of the acclaimed Musician Mr Eric Clapton where famous rockstars came to stay and played music into the early hours.

Privately owned, we pride ourselves in providing a personal, professional and attentive service, tailored to your individual needs. Dine and indulge in our Barton Rooms fine dining restaurant or relax in our Garden Bar & Restaurant to experience our signature castle Afternoon Tea and rest like a King or Queen in one of our many four-posted bedrooms.

Explore what County Kildare has to offer by day trips to include a visit to the Irish National Stud, Newbridge Silverware or Kildare Village luxury shopping outlet.

Awards include:

**Best Historic Hotel of Europe** – Castle Winner.

Bedrooms **55 Ensuite**

Hotel ★ ★ ★ ★

#### **Barberstown Castle, Straffan, Co.Kildare**

T +353 (0)1 628 8157  
[info@barberstowncastle.ie](mailto:info@barberstowncastle.ie)  
[www.barberstowncastle.ie](http://www.barberstowncastle.ie)

**Proprietors: Amanda Torrens, Ted Robinson**  
**General Manager: Richard Millea**

Offers exclusive to the Blue Book & Multi-Night packages available.

Casual Dining is available 7 days a week in the Garden Bar / Conservatory Lounge offering a bright and airy space.

The Barton Rooms Restaurant is open Thursday, Friday, Saturday evenings and Sunday Lunch, blending Country House Dining and French Cuisines.

#### **How to find:**

Leave the airport and take the exit for the M50 Southbound.

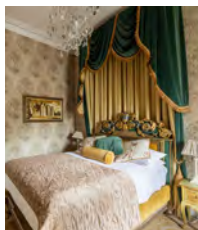
Leave the M50 at exit 7 (M4) and continue on the N4/M4 westward.

Leave the M4 at exit/junction 7 (Straffan/Maynooth) and take the R407 to Straffan.





6



Experience the enchantment of Belleek Castle Hotel in County Mayo, where history and luxury meet. Dine at our award-winning Library Restaurant, enjoying Flamed steak on a 15th Century sword, or indulge in castle-style Afternoon Teas. Explore the castle's rich heritage, featuring Europe's largest private collection of fossils and armor, on expert-guided tours.

Celebrate your wedding in our Neo-Gothic banqueting hall, with bespoke venue hire for intimate or grand events. Set within 1000 acres of serene woodlands, Belleek Castle offers fishing, hunting, golfing, and surfing. Three generations ensure a warm, unforgettable stay.

Awards:

**AA** 2 Rosettes

**Michelin Guide**

**Irish Hotel Awards** – Intimate Wedding Venue of the Year

Most Authentic Irish Castle & Hospitality Experience.

Bedrooms **10**

Hotel ★ ★ ★ ★

**Belleek Castle,  
Ballina, Co. Mayo, F26 KV04**

T +353 (0) 96 22 400

info@belleekcastle.eu

www.belleekcastle.com

**Proprietors: The Doran Family**  
**General Manager: Mathieu Doran**  
Rates from €189 +

#### How to find:

When traveling on the Dublin/Foxford Road towards Ballina, continue straight through the first two sets of traffic lights. At the roundabout, go straight ahead. After approximately 1km, take a right turn onto a narrow road. Follow the road until you spot the Belleek Castle sign on your left-hand side.

#### GPS coordinates

N54° 07 59.1

W-009° 08 42.5

N54.13307 W-9.14513







Perfectly positioned within the historic city walls, nestled in the heart of the "Cathedral Quarter" this iconic landmark is the epitome of Edwardian elegance; an intimate urban oasis featuring 31 luxurious guestrooms, a beautiful collection of 8 boutique apartments, perfect for family escapes, a residents lounge, fitness area and champagne lounge. Bishop's Gate Hotel blends stunning Edwardian architecture, stylish appointments and luxurious facilities which have been sensitively restored to pay homage to the rich heritage of the building, whilst exceeding the contemporary needs and desires of its guests.

The way in which guests are welcomed, attended to during their stay and remembered when they come back is the essence of Bishop's Gate Hotel.

**TripAdvisor:** Travellers Choice Awards: Top 20 'Best of the Best' Hotels in the UK 2024

**Embrace a Giant Spirit Awards:** Hotel of the Year 2022

Bedrooms **31** Apartments **8**

Hotel ★ ★ ★ ★

**Bishop's Gate Hotel**  
**24 Bishop's Street, Derry, BT486PP**  
T +44 (0)28 711 40300  
sales@bishopsgatehotelderry.com  
www.bishopsgatehotelderry.com

**Proprietors: Ciaran and Anne Marie O'Neill**  
Rates From £175 per night inc Breakfast.

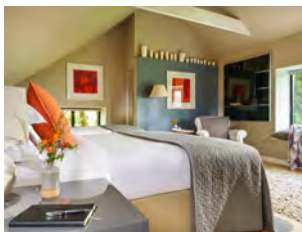
**How to find:**

1 Hour 15 Minutes from Belfast International Airport Via A6.  
3 Hours From Dublin Airport Via A5.  
Nestled where the Wild Atlantic Way meets The Causeway Coastal Route.

**GPS coordinates**

54.994772  
-7.323118





In this Georgian country house standing at the head of Dunmanus Bay, everything revolves around the courtyard. Finely restored with cobbled paths, shrubs and flowers, it's 500 year old stone outbuildings contain four beautiful apartments as well as the restaurant with its magnificent dining room.

Blairscove Restaurant is best known for its buffet style starters and scrumptious desserts.

The elegant setting, the pretty courtyard and the landscaped gardens make it an ideal venue for weddings of up to 100 guests.

**AA** 2 rosettes for culinary excellence 2024.

**AA \*\*\*\*** for Accommodation 2024.

**McKennas Guides** 100 Best Places to Stay 2024.

#### Bedrooms 4 courtyard suites

#### Blairscove House & Restaurant, Durrus, Bantry, Co.Cork, P75 FE44

T +353 (0)27 61127

mail@blairscove.ie

www.blairscove.ie

#blairscove Instagram @blairscove

#### Proprietors: Ann & Chris Woodward Restaurant:

Open from 14th March 2024 – 26th October 2024.

Tuesday – Saturday 6pm – 9:30pm.

3 course table d'hôte menu €90.

#### Accommodation:

Open from 14th March 2024 – 26th October 2024.

Tuesday – Saturday nights.

Bed & Breakfast from €210 – €350 per room

based on 2 people sharing.

Most credit cards accepted with the exception of American Express.

**How to find:** Coming from Durrus, follow the R591 to Crookhaven. After 2.5km you'll see the blue gate on the right hand side.  
Cork airport: 1hr 15mins.

#### GPS coordinates

51 degrees 36' 33" N  
9 degrees 32' 18" W





Browns Bonds Hill is hailed as putting the North West on the foodie map with its fine dining menus and numerous award wins.

Located on the banks of the River Foyle overlooking Derry's Peace Bridge, Browns boasts a stylish art deco interior and is luxurious and comfortable.

Recommended by the Michelin Guide every year since opening, the menu is modern Irish using the best local and seasonal ingredients.

Awards:

**Michelin Guide** Recommended.

**Restaurants Association of Ireland:**

Best Chef in Ulster 2023: Ian Orr.

Best Restaurant in Co Derry 2023, for the eleventh time.

Best Restaurant in Ulster 2013 & 2016.

**AA:** Two Rosettes, 2023.

**Tourism NI:** Best Food Tourism Experience in Northern Ireland 2017.

**Browns Bonds Hill, 1 Bonds Hill,  
Derry BT47 6DW**

T + 44(0)28 7134 5180

eat@brownsrestaurant.com

www.brownsbondshill.com

**Proprietor: Roulston & Orr, Browns Bonds  
Hill Collection**

Serving à la carte lunch and dinner, tasting menu.

Lunch: Wednesday – Saturday 12pm – 2.30pm.

Dinner: Tuesday – Thursday 5pm – 9pm.

Friday – Saturday 5pm – 10pm.

Private dining.

Sample menus on brownsbondshill.com

**How to find:**

Follow the A6 to Derry.

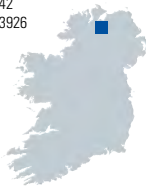
Turn left onto Clooney Terrace at the traffic lights.

Take an immediate right onto Browns Bonds Hill  
and follow to the bottom of the street.

**GPS coordinates**

Latitude 54.99308395385742

Longitude -7.311734199523926



# THE BUSHMILLS INN

HISTORIC INN & RESTAURANT

10



Set against the backdrop of the Causeway Coast, the boutique Bushmills Inn Hotel and Restaurant offers the perfect base to explore the Giant's Causeway, Carrick-a-Rede Rope Bridge, Bushmills Distillery, Dunluce Castle and Royal Portrush Golf Club.

Indulge in exquisite cuisine in our AA Rosette Restaurant, enjoy a night at the movies, relax in our traditional Gas Bar with a glass of whiskey and then enjoy a restful night's sleep in a bedroom individually designed with unique character and charm.

From roaring peat fires and nooks and crannies just waiting to be explored, the Inn epitomises the true spirit of Irish hospitality.

Awards include: **AA Rosette** for Culinary Excellence. **TripAdvisor's** Certificate of Excellence. **Northern Ireland Tourism Awards** for Hotel of the Year and Customer Service Excellence. **Good Eating Guide** Best Hotel Restaurant.

**Hospitality Ulster** Top 100 Hospitality Business. **Good Food Ireland** Food Lovers Choice Award for Northern Ireland.

Bedrooms **41**

Specialist accommodation **Historic Building**

Hotel ★ ★ ★ ★

**The Bushmills Inn, 9 Dunluce Road,  
Bushmills, Co. Antrim, BT57 8QG**

T + 44(0)28 207 33000

info@bushmillsinn.com

www.bushmillsinn.com

**General Manager: Alan Walls**

Open all year Monday to Sunday.

Restaurant open all day: 12 noon to 9.30pm,

Dinner 5pm to 9.30pm. From £60pp for 3 courses.

B&B: Low Season: Nov – Mar from £85 pps.

High Season: April – Oct from £140 pps.

All bedrooms non-smoking.

Credit Cards: Amex, Mastercard, Visa.

**How to find:**

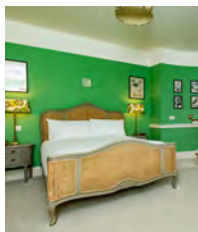
From Belfast follow the M2 north to Ballymena then A26 to Ballymoney. At the roundabout take the third exit onto B62 heading to Portrush/ Bushmills, turn right onto Priestland Road (B17) then right onto Dunluce Road (A2). The Bushmills Inn will be on the left.

**GPS coordinates**

N 55 12' 25.64"

W 6 31' 26.63"





Butler House & Garden is the Dower House of Kilkenny Castle. Built in 1786 in the heart of medieval Kilkenny, we offer a charming stay in our elegant Georgian house in the shadow of Kilkenny Castle.

Seventeen comfortable bedrooms are individually decorated, each with its own unique character. Enjoy breakfast in the delightful Lady Eleanor Room overlooking the walled garden and Kilkenny Castle. Day dining - cream tea and lunch are served in the Garden View Room or on The Patio and drinks service till late evening.

Walk through the garden gate to the adjoining Castle Yard craft studios and galleries before strolling through to Kilkenny Castle.

Awards:

Listed in **Irish Independent** Top 100 Hotels and 10 Top Townhouse Stays.

Travellers Choice by **TripAdvisor**.

Shortlisted in the **National Hospitality Awards** for Best Boutique Hotel.

## Bedrooms 17

## Specialist accommodation Historic Building

### Butler House 16 Patrick St, Kilkenny City, Ireland.

T +353 (0)56 7722828

res@butler.ie

www.butler.ie

### Proprietors: Kilkenny Civic Trust

Closed 23rd December to 27th December inclusive.

Rates: Bed and Breakfast from €140 per night.

### How to find:

Kilkenny city centre, approx 70 mins from Dublin Airport on M9 and 120mins from Cork.

### GPS coordinates

52.6489246 Lat

-7.250782 Long







Cahernane House Hotel is a unique experience of old Irish history mixed with modern luxuries. Beautifully situated in its own private estate on the edge of Killarney National Park, and only a 20-minute walk to Killarney town centre.

Cahernane House Hotel exudes a sense of relaxation and peacefulness where guests can retreat from the hectic pace of life into a cocoon of calmness and serenity.

Dine on local produce in the award-winning Herbert's Restaurant (Wednesday to Sunday) or soak up the atmosphere in The Cellar Bar, (7 days a week) where you can enjoy a drink or casual dining experience from the all-day dining menu. For weddings, Cahernane House Hotel offers two options: exclusive use of our Manor House for a grand celebration or intimate weddings for up to 25 guests.

Awards include: **AA** – 2 Rosettes for Culinary Excellence, 2023 Awarded Silver Medal for **Green Tourism**, 2023 **Excellent Employer Award** – Best Small Hotel, 2020 **McKenna Guide**: Irelands Best Places to Stay Award, 2020 Travellers' Choice Award – **TripAdvisor**, 2019 **Gold Medal Award** Winner.

## Bedrooms 48

(40 of which are in the Manor House and 8 in the Coach House)

Hotel ★ ★ ★ ★

**Cahernane House Hotel**  
**Muckcross Road, Cahernane, Killarney**  
**Co. Kerry, Ireland, V93 E78W**  
T +353 64 663 1895  
info@cahernane.com  
www.cahernane.com

**Proprietors: Prem Group Ltd.**  
**General Manager: Emer Corridan**  
Bed & Breakfast from €209 per room per night.  
Open everyday March to October 31st.  
Open weekends only in November & December.  
Closed January & February.  
Herbert's Restaurant open 6pm to 9pm.  
Cellar Bar menu daily from 1pm to 9pm.

## How to find:

4 hours drive from Dublin.  
25 minutes drive from Kerry Airport.  
From Killarney town, take the N72 south. Hotel is located on the right after crossing the Flesk River.  
Taxi from Killarney Train Station approx. €10.

## GPS coordinates

Lat: 52.043169  
Long: -9.509847

## GDS Codes:

Amadeus – YX KIRCHH  
Sabre – YX 321693  
Galileo/Apollo – YX E7454  
Worldspan – YX ORKCH  
Pep ADS / Travelhub  
– YX 4168







Campagne, a Michelin starred restaurant located in the heart of medieval Kilkenny. Established in 2008, the emphasis has been to serve food based on high quality seasonal produce with French influences.

Located under the old railway arches on Gas House lane, Campagne boasts a stylish interior featuring oak flooring, curved banquette seating and modern paintings depicting rural life by local artist Catherine Barron.

Campagne has been awarded many prestigious awards on a national and international level, most notably one Michelin star in September 2013.

### Restaurant 1 Michelin star

#### **Campagne Restaurant** **5 The Arches, Gas House Lane,** **Kilkenny, R95 X092**

T +353 (0)56 777 2858

info@campagne.ie

www.campagne.ie

#### **Proprietors: Garrett Byrne & Brid Hannon**

Opening hours: Closed Mondays and Tuesdays.

Dinner: Wednesday & Thursday 5.30pm – 9pm.

Dinner: Friday & Saturday 5pm – 9.30pm.

Lunch: Sundays only 12.30pm – 2.30pm.

Open Sunday nights on June, August and October bank holiday weekends 6pm – 8pm.

Annual Holiday; 2 weeks in January, 1 week in July.

#### **How to find:**

Campagne is located just under the cities old railway arches, in an area called John's green, the restaurant is in close proximity to Mc Donagh Junction shopping centre.

#### **GPS coordinates**

52°8304;39'21" N

7°8304;14'47" W





For your quintessential Irish Country House experience, “Enchanting Carrig House” on the shores of Caragh Lake, Killorglin offers an “escape from it all” amongst the most beautiful scenery in Ireland.

At the heart of the Reeks District “Ireland’s Adventure Playground” enjoy hiking, biking, SUP, golf, horse riding. Tour Ring of Kerry, Dingle Peninsula, Killarney National Park, World Heritage Site Skellig Michael. Snuggle up in a comfy king size bed, awake to the lake lapping on the shore. Stroll the wonderful gardens, indulge in a good book or chess in the Drawing Rooms.

Savour aperitifs, fine wines and creative Irish Country House cooking in our award-winning Lakeside Restaurant. Frank, Mary, Claire, Kevin and their friendly, attentive, local team extend a warm welcome and unique Irish country House experience.

**Best** County House Restaurant Kerry 2019, Best Chef Kerry 2015.

**Gold Medal** “Ireland’s Country House 2015/2016.

**Georgina Campbell’s** “Country House of the Year 2013.

**Travel Editor’s Choice 2023:** Tom Breathnach, Irish Examiner.

Bedrooms **16** (including 2 Suites)

Country House ★ ★ ★ ★

### **Carrig Country House & Restaurant, Caragh Lake, Killorglin, Co.Kerry V93 WK83**

T +353 (0)66 976 9100

info@carrighouse.com www.carrighouse.com

#### **Hosts / Proprietors: The Slattery Family**

Open March – October inclusive.

B&B low season €85 – €165pps.

B&B High Season €99 – €195pps.

Single Supplement €85.

2&3 Day & Dinner Package.

Book Direct: carrighouse.com

Dinner: A la Carte or Dinner Menu available from 6.30 – 9pm.

Non-residents welcome for Dinner.

Visa, Mastercard accepted.

#### **How to find:**

**From Killorglin (10 minutes)** – N70 from Killorglin towards Glenbeigh for 4km. After PROMED offices, take 2nd left for Caragh Lake (signposted). At Caragh Lake School and Shop see signpost for Carrig, take sharp right, located 1km further on the left.

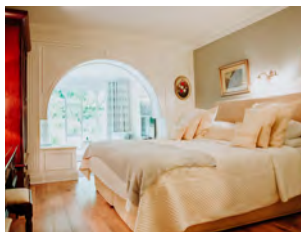
**From Glenbeigh (10 minutes)** – Take the N70 in the direction of Killorglin for 4km, go over one-way stone bridge turning right, continue for approx. 1km and turn right onto the Caragh Lake road (Carrig signpost, before the Red Fox Inn) and drive for 2km. Carrig Country House is on the right.

#### **GPS coordinates**

N 52° 4' 26.23"

W 9° 51' 0.58"





A perfect start on the Wild Atlantic Way. Cashel House Hotel is a cosy 18th Century Historic House, in 50 acres of award-winning gardens overlooking the beautiful coastline of Cashel Bay with Cashel Hill rising behind. Owned by the McEvilly family for over 50 years, a warm welcome awaits. You can unwind and enjoy a quiet peaceful atmosphere. Relax in the Drawing Rooms with open fires and antiques. Retire to comfortable romantic double or spacious Mini-Garden Suites.

Dine in the restaurant overlooking our award winning gardens and views of Cashel Bay with simple Country House Cuisine. Local Seafood and Connemara Lamb dishes, all served with locally sourced vegetables and produce. Enjoy walking, sandy beaches, sea & lake fishing, riding, hiking, golf, Kylemore Abbey, Aran & Inish Boffin Island or a boat trip around Killary Fjord.

**AA** – Two AA Rosettes for Culinary Excellence.

**Patricia Schultz** – 1,000 Places to See Before You Die.

**National Garden Awards** – Overall Winner Best Gardens in Ireland.

**One Fab Day** – Top 50 Best Country House Wedding Venues in Ireland.

**Bedrooms** 29

**Hotel** ★ ★ ★ ★

**Cashel House Hotel, Cashel,  
Connemara, Co. Galway, H91 XE10**

T +353 (0)95 31001

sales@cashelhouse.ie

www.cashelhouse.ie

**Proprietors: The McEvilly Family**

**Hotel Manager: Ray Doorley**

Closed January and re-opens mid-March.

The hotel is exclusive to residents, non-residents. reservations are required.

B&B low season from €110pps.

Garden Suites from €140pps.

B&B high season from €155pps.

Special 2+ day package rates.

Dinner: from €69, ALC available.

Blue Book Vouchers – free room upgrade when available.

Pet Friendly to all sizes.

Exclusive Wedding Bookings max 124.

EV Car Charging stations.

**How to find:**

South off N59 (Galway Clifden Road).

1.6 kilometres west of Recess, turn left.

**GPS coordinates**

53.419547

-9.807950





Set within a magnificent 1732 Palladian manor, with views of the iconic Rock of Cashel, this landmark address has been meticulously restored to create a truly desirable destination hotel in the heart of Ireland. Optimally located between town and countryside, the hotel offers elegant accommodation and public areas, complemented by expansive gardens, a world class Spa and the convivial Guinness Bar.

Dining is exceptional with Culinary Director Stephen Hayes overseeing a variety of menu offerings across The Queen Anne Room, Mikey Ryan's Bar & Kitchen, The Bishop's Buttery – One Michelin Star, The Ballroom and nearby Sadler's Restaurant in Fethard.

Awards & Accolades: **Travel + Leisure**, Readers' 12th Favorite Hotels in Europe 2024, Best New Hotels in the World '2023 It List' 2023, **Irish Independent** Reader Travel Awards – Best Hotel Restaurant 2024, **Hotel & Catering** Gold Medal Awards – Best Front of House Team 2024, **Condé Nast Traveler** – Readers' Choice Awards: Voted No. 3 Top Hotel in Ireland 2023 **Irish Restaurant Awards** – Hotel Restaurant of the Year 2023.

Bedrooms **42 Bedrooms** including 8 Suites

Hotel ★ ★ ★ ★ ★

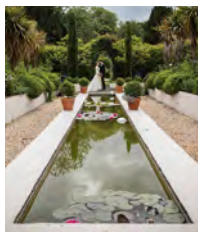
**Cashel Palace Hotel, Main Street,  
Cashel, Co.Tipperary, E25 EF61, Ireland**  
T +353 (0) 62 62002  
reservations@cashelpalacehotel.ie  
www.cashelpalacehotel.ie

**Proprietors: The Magnier Family.**  
**General Manager: Adriaan Bartels**  
€375 – €1,300 B&B.

**How to find:**  
Located in the town of Cashel, Co.Tipperary and found most easily via the main Dublin – Cork motorway, M8 (exits 7, 8, 9).

**GPS coordinates**  
Latitude 52.517335  
Longitude -7.889055





Castle Durrow Country House was built by the Flower family in 1716. Situated on the banks of the river Erkina, we are surrounded by woodlands and the rolling fields of the Irish countryside, nestled in the heart of the country.

Now entering a new chapter under the stewardship of second-generation Tessa and her husband Robin, Tessa's parents, Peter & Shelly Stokes, lovingly restored Castle Durrow in 1999, rekindling the property to its former grandeur.

Castle Durrow, one of Ireland's premier wedding venue's and most highly sought-after luxury hotel, remains an enduring testament to Irish heritage and elegance.

Recent Awards: **Trip Advisor 2016** – Top 10 Castle Hotels in the World.

**Trip Advisor 2017** – Top 10 Hotels in Ireland.

**Trip Advisor 2017** – No.4 Luxury Hotel in Ireland.

**Irish Restaurant Awards** – Winners from 2010 to 2017.

**One Fab Day** Top 100 Wedding Venues in Ireland.

## Bedrooms 48

### Castle Durrow, Durrow, Co.Laois, R32 EA02

T +353 (0)57 873 6555  
reservations@castledurrow.com  
www.castledurrow.com  
Social Media @CastleDurrow

#### Proprietors: The Stokes-Leidig Family

Open for B&B & DBB Thursdays to Sunday's.

Closed for Christmas & January.

Bed & Breakfast from €240 per room.

Evening dining in Coopers from Thursdays to

Saturdays & Sunday lunches serving a Table

D'Hote from €39 per person.

Casual lunch in Hunters on Thursday's to

Saturday's A La Carte menu. Private Dining Rooms

available for special occasions.

Dining & accommodation only available on non-wedding days.

#### How to find:

**From Dublin:** On M7 take exit 17 then N77 through Abbeyleix to Durrow.

**From Cork:** On M8 take exit 4 then R639 through Johnstown, Cullohill to Durrow.

#### GPS Coordinates:

Lat: 52.846301

Long: -7.401223







Castle Grove is a family-run Country House Hotel, known as “Donegal’s Hidden Gem”, famous for its warm welcome and excellent customer care. The Georgian house, built in 1695 is set amidst 250-acre estate with gardens designed by “Capability” Brown. Six miles north of Letterkenny, ideally located to explore Donegal and Wild Atlantic Way.

Two drawing rooms with open fireplaces, a library, cosy bar and all ensuite bedrooms are furnished with antiques and luxury fabrics. The award-winning restaurant serves cuisine from locally sourced produce with fruit and vegetables fresh from our four-acre walled garden.

Castle Grove Country House is one of the last private estates in the northwest of Ireland, offering you an oasis of privacy and tranquility rarely found today. Available for weddings and parties. Golf Tours, Fishing, Shooting, Horse Riding and local sightseeing can be arranged.

**McKenna Guide** Best in Ireland 2021/22/23.

**Trip Advisor** Top 10 Boutique Hotels in Ireland, Travelers Choice Award 2024.

**Georgina Campbell** Host of the Year 2020.

**Bedrooms 10**

**Hotel ★ ★ ★ ★**

### Castle Grove House Letterkenny, Co. Donegal, F92 A462

T +353 (0)74 91 51118

stay@castlegrove.com

www.castlegrove.com

@castlegrove1695 – Facebook

#### Proprietors: The Sweeney Family

Open all year round, except Christmas.

Low Season: €185 – €240.

High Season: €205 – €260.

Dinner: Set menu €60.

Sunday Lunch: €37.50.

Customized Menu's available.

#### How to find:

From Dublin take the M1, then N2 and onto the A5 via Omagh. Follow signs to Letterkenny (N14) From Belfast take the M2/M22, then the A6. From Letterkenny follow signs to Ramelton (R245) for 2.8 Miles. Turn right at the junction and follow the signs to Castle Grove Country House Hotel. City of Derry and Donegal airports 45 mins (collection service available).

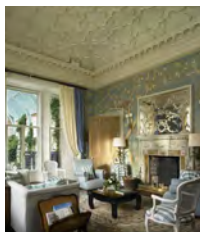
#### GPS Coordinates:

Latitude: 54.986436

Longitude: -7.660938







Nestled on 1,000 acres of undulating Irish countryside, dotted with ancient woodland and glittering lakes, Castle Leslie Estate is one of the last great Irish castle estates still in the hands of its founding family.

The Castle offers authentic original interiors and old-style hospitality.

The Lodge is a country house style boutique hotel with 2 AA Rosette award winning Snaffles Restaurant. Explore the Estate on horseback and enjoy some of the many other activities on offer including clay target shooting, archery, fishing, walking trails, the spa, falconry or horse drawn carriage rides.

**Best Workplaces in Ireland™** in 2024.

**Virgin Media Gold Medal Award 2023:** Ireland's Favourite Place to Stay and Ireland's Castle & Heritage Wedding Excellence.

**World Travel Awards:** Ireland's Leading Boutique Hotel 2023 and 2022.

**TripAdvisor** Traveller's Choice 'Best of the Best' Award 2022.

## Bedrooms 71

## Specialist accommodation **Historic Castle**

### Castle Leslie Estate, Glaslough, Co. Monaghan

T +353 (0)47 88100

info@castleleslie.com

www.castleleslie.com

**Proprietor: Sammy Leslie**

**CEO: Brian Baldwin**

Bed and Breakfast:

From €195 per room at The Lodge.

From €315 per room at The Castle.

Special offers are available throughout the year.

### How to find:

From Dublin take M1 north. Exit at Junction 14 for Ardee. Follow N2 Monaghan/Derry. Continue on the N2 to Monaghan bypass – do not enter town. 1st roundabout follow N2 for Derry. Continue to 3rd roundabout. Take 3rd exit signposted Armagh (N12). Follow N12 for 2 miles. Turn left at signpost for Glaslough (R185). Follow road to Glaslough. 80 minutes from Dublin, 60 minutes from Belfast.

### GPS coordinates

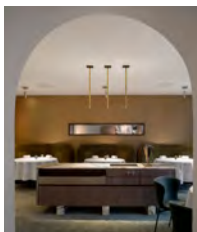
Lat: 54.31821

Long: -6.89582

### Garmin Loc8 code

G6E-22-5TK





Chapter One by Mickael Viljanen located in Dublin city centre was originally opened in 1993. It is today co-owned by former owner and chef patron Ross Lewis and current head chef Mickael Viljanen, who's arrival in 2021 saw the restaurant go to two Michelin stars.

Eye-catching, original, Irish artwork adorns the walls of this luxurious Georgian basement restaurant. The former home of John Jameson, now houses a full collection of Midleton whiskey spanning 36 vintages. The only collection of its kind for sale by the glass, in the world.

Chapter One has retained a high quality of service over a number of years. This, paired with Viljanen's innovative cooking style, in which he produces exquisite dishes with bold but balanced flavours, allows for a dining experience that is well-rounded and emphasises the understated luxury of fine-dining.

### Restaurant **2 Michelin stars**

#### **Chapter One** **18/19 Parnell Square, Dublin 1**

T +353 (0)1 873 2266

F +353 (0)1 873 2330

info@chapteronerestaurant.com

www.chapteronerestaurant.com

Closed Sundays and Mondays.

Opening Hours:

**Lunch:** Thursday to Saturday, 12pm – 2pm.

Last orders for Tasting Menu at 1.30pm.

3 course Lunch: €85pp.

Tasting Lunch: €145pp.

**Dinner:** Tuesday to Saturday, 6.30 – 9.30pm.

Four-course Dinner: €175pp.

Tasting Dinner: €215pp.

Annual Holidays: Christmas – two weeks;

Summer Holidays: 29th June – 16th July.

Private Dining:

The Midleton Room: 10 people.

#### **How to find:**

Centre of Dublin – Parnell Square is at the top of O'Connell Street.



# CLARE ISLAND LIGHTHOUSE

21



This 200 year old lighthouse, situated on Clare Island in Clew Bay County Mayo, has been completely restored and opened for guests in 2013. Its location high on the cliffs, 120 meters above the sea, enables spectacular views over the Atlantic Ocean and surrounding areas.

The interiors, in keeping with the ethos of the Lighthouse, are understated but exceedingly comfortable. There is lots to do... Walking, swimming, hiking, cycling, birdwatching, reading or simply relaxing, bikes and e-bikes available to rent on the island. There is an island taxi which is also available for tours. Private Chef on request.

Clare Island Lighthouse is one of the GREAT LIGHTHOUSES of Ireland on the Wild Atlantic Way.

**World Boutique Hotel Award** Best Coastal Boutique Hotel in Europe WINNER 2016.

**Trip Advisor** – Travellers Choice 2022.

Accommodation **6 en-suites** sleeping 14 guests max

## Clare Island Lighthouse

T +353 (0)87 668 9758

info@clareislandlighthouse.com

bookinglighthouse@gmail.com

www.clareislandlighthouse.com

### Proprietor: The Fischer Family

#### General Manager: Ms Roie Mc Cann

Open March 14th 2025 to December 8th 2025.

Room Rates from €280 per night.

Breakfast €15 per person.

For out of Season or longer stays please contact us.

We offer bed and breakfast or self-catering.

You can also rent 4, 5 or 6 rooms self-catering and have the whole Lighthouse to yourself!

(Caretaker on site).

Doggie friendly.

All credit cards accepted.

### How to find:

Directions from Westport to Clare Island – Take the R335 to Louisburgh (20km).

Approximately 1.5km after Louisburgh town take a right turn for Roonagh Pier (approx 7km).

The ferry sails from Roonagh Pier to Clare Island.

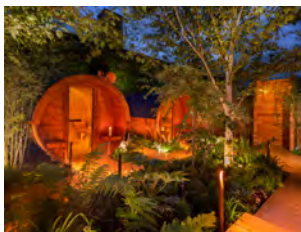
(20 minutes approx.).

### GPS coordinates

53.82822 N

-9.98340 E





Cliff at Lyons in Kildare includes exquisite rooms and quaint cottages surrounded by lush gardens. Guests enjoy complimentary access to Village Thermal, a therapeutic experience with Finnish barrel saunas and hot tubs under a canopy of green. Breakfast at The Orangery, a Victorian conservatory, is included as standard.

Savour seasonal gastronomy curated by Chef Sean Smith at The Mill Restaurant – a palatial fine dining haven with a warm, open fireplace and windows overlooking a waterfall. The Pantry at Trellis café serves house-made treats and coffee, ideal for those enjoying a stroll along the canal.

Spa lovers may escape to the luxurious and intimate surroundings of The Well in the Garden, which offers a range of therapies utilising products from the award-winning Well at Cliff range.

Cliff at Lyons is also home to bespoke venues, ideal for private events of all sizes.

Bedrooms **24** | 2 Bedroom Cottages **5**

Hotel ★ ★ ★ ★

### Cliff at Lyons

**Lyons Road, Celbridge, Kildare, Ireland,  
W23 F8KP**

T +353 (0)1 630 3500

reception@cliffatlyons.ie

www.cliffatlyons.ie

### Proprietors: Barry and Gerri O'Callaghan

Wednesdays – Sundays and Bank Holiday  
Mondays.

Closed 24th December evening – 27th December.

Dinner, Bed and Breakfast: €390 – €590 per  
person.

Self-Catering Cottages from €550.

### How to find:

From Dublin City Centre, Via N7 – Take the N7 out of Dublin City Centre. Take exit number 4 for Rathcoole / Newcastle. Drive through Newcastle Village. Take the third turn on the right (first right turn is for Lucan and second is for Celbridge). Follow the road for about 1.5 miles. Just before a humpbacked bridge you'll see large cream gates on your left with two lions on the gatepost. This is Cliff at Lyons.

### GPS coordinates

North 53 degrees 18.379 min.  
and West 006 degrees  
32.494 min.





A back to nature, lakeside Connemara bolthole, Currarevagh is situated in 180 acres of private woodland estate, now a European Special Area of Conservation.

In the 8th generation of ownership, and having welcomed guests since 1885, Currarevagh is a hidden retreat where the peaceful, rewilded grounds and simple, elegant food take centre stage. Lucy cooks with originality and passion, sourcing local organic produce; each evening a 4 course tasting menu is served.

The wood fired, panoramic boathouse sauna is not to be missed; take a wild swim in the lake or row a clinker boat to explore the islands of Lough Corrib. We have many walks, with abundant wildlife. All the majesty of Connemara and the Aran Islands are within easy reach.

**Georgina Campbell Guide** Small Stay Award 2024.

**Good Hotel Guide** Editor's Choice Country House Hotel 2023.

**Good Hotel Guide** Editor's Choice Eco Friendly Hotel 2024.

**Sunday Telegraph** Review 9/10 (Fiona Duncan).

## Bedrooms 9

## Specialist accommodation **Historic House**

### **Currarevagh House, Oughterard, Connemara, Co. Galway H91 X3C2**

T +353 (0)91 552312  
rooms@currarevagh.com  
www.currarevagh.com

#### **Proprietors: The Hodgson Family**

Open March 1st to November 30th 2025.  
Bed and Breakfast from €100 – €150 pps.  
Single rooms available.

#### **How to find:**

Take the N59 (Galway/Clifden) road to Oughterard. Turn right in village square and follow the Glann road for 6 kms.

#### **Extra information:**

Afternoon Tea each day included in all rates – residents only. Reduced rates for stays of 2 days or more. Exclusive house rental available all year 12 to 18 guests.  
EV charger available.

#### **GPS coordinates**

N 53 27.657  
W 9 21.518





Open since 2004, Dax Restaurant offers unrivalled levels of elegant dining and fine French cuisine in Dublin's historic Georgian quarter.

The impressive mix of professional service and delicious food makes it a premier destination for corporate entertainment, special occasions, or casual dining.

Head Chef Graham Neville, who joined the company in 2017, cooks modern Irish cuisine using the very finest local produce delivering an experience of taste and culture that is renowned throughout the Irish Capital and beyond. Olivier invites you to explore this passion for food & wine at Dax Restaurant.

Their impressive wine list is well known and will attract all food and wine lovers.

**Irish Restaurant Awards** – Best Chef Ireland 2019, Best Chef Dublin 2019, Best Restaurant Dublin 2019.

**Georgina Campbell's Ireland Guide** – Restaurant of the Year 2018.

**Dax Restaurant**  
**23 Pembroke Street Upper,**  
**Dublin, D02 AK20**

T + 353 (0) 1 676 1494

olivier@dax.ie

www.dax.ie

**Proprietor/ Restaurant Manager:**

**Olivier Meissonave**

**Head Chef: Graham Neville**

Lunch: Wednesday – Friday 12.30pm (last order 2pm) Saturday Lunch from 2025

Dinner: Wednesday – Saturday 18:00 – 21:00 (last orders 9pm).

Holiday Closures: Christmas Day for 10 days

Opening days/times are subject to change throughout the year.

See [www.dax.ie](http://www.dax.ie) for full details.

Lunch: 2 courses €42, 3 courses €58

Dinner: 3 courses €89

Gluten Free Friendly dishes

Vegan/Vegetarian Options Available.

**How to find:**

Located in the heart of Dublin's Georgian District. Less than a 5 minute walk from St. Stephen's Green, 2 minute walk from Fitzwilliam Square.







Set amidst the serene valleys, tumbling streams & vast lakes, and majestic mountain slopes of Connemara, Delphi Lodge is a 200-year-old country house on a 1000-acre estate that exudes glamour and sophistication. Once the sporting retreat of the Marquis of Sligo, its charm endures, drawing those who enjoy winter woodcock shooting or year-round activities like golfing, horseback riding, and walking. Nearby, you'll find the imposing Mweelrea Mountain, meaning "the gray bald one," along with Ireland's only natural fjord at Killary Harbour.

Many guests visit for fly-fishing, with the lodge offering expert instruction and a well-equipped salmon club providing permits, licenses, and gear. For those seeking relaxation, Delphi Lodge offers the perfect escape – cozy up by a wood-burning fire, breathe in the fresh country air, and let the peaceful ambiance wash over you. Dining at Delphi is a very special experience, where our talented chefs prepare a dining experience like no other, served with a carefully selected wine list. Guests gather around our antique communal oak dining table, sharing stories, laughter, and forging new friendships with every meal, creating memories that will last a lifetime.

### Bedrooms 13

### Specialist accommodation Historic House

#### **Delphi Lodge, Leenane, Co. Galway, H91 R5Y6, Ireland**

T +353 (0) 954 2222  
info@delphilodge.ie  
www.delphilodge.ie

#### **Chief Executive Officer: Philip Counihan**

Classic double room with breakfast from €250 for two people.

Available for Exclusive House Party's, Corporate Exclusivity, Small Weddings, Family Gatherings, Please email [generalmanager@delphilodge.ie](mailto:generalmanager@delphilodge.ie) to arrange your Exclusive party.

#### **How to find:**

From Galway: Head on N59 towards Clifden, through Moycullen & Oughterard. Turn right at

Maam Cross, then left at junction in Maam, right in Leenane, then turn left to Delphi/Louisburgh, Delphi Lodge is 6 miles.

From Westport: (a) Head on N59 towards Clifden, 15 miles from Westport take next right for Delphi/Louisburgh. Delphi Lodge is 6 miles.

(b) Or via Louisburgh Pass through Louisburgh and then turn left towards Leenane. Continue 10 miles, Doolough lake on your right, then ½ a mile Delphi on right.

#### **GPS coordinates**

53.631916  
- 9.747190





Dating back to the 16th Century and surrounded by 500 acres of unspoiled woodlands, Dromoland Castle is a self-contained world of light-hearted luxury. Once the ancestral home of the O'Briens of Dromoland whose lineage dates back to Brian Ború, one of the last High Kings of Ireland.

This grand Castle is renowned for its warm welcome from the Castle's wonderful cast of characters and is perfectly positioned to explore the Wild Atlantic Way within fifty minutes of the Cliffs of Moher. Explore Dromoland's historical Walled Gardens, forest trails and a host of countryside pursuits including archery, falconry, yoga, or golf Dromoland's Championship Parkland Golf Course. Dine at Earl of Thomond or Fig Tree Restaurant where cuisine is inspired by County Clare's rugged landscape or relax into a visit to the award winning Castle Spa.

Awards: **Irish Independent** Readers Choice Award Best Hotel in Ireland 2024.

**Gold Medal Awards** – Ireland's Leading Green Hotel 2024.

**Conde Nast** Readers Choice Award 2019 – Second Best Resort in Europe.

**Trip Advisor** – Worlds Best Sleep 2023.

Bedrooms **96** including Suites

Hotel ★ ★ ★ ★ ★

**Dromoland Castle, Newmarket-On-Fergus, County Clare, V95 ATD3, Ireland**

T: + 353 (0) 61 368144

Reservations@dromoland.ie

Social: @dromolandcastlehotel

**General Manager: Mark Nolan**

Day Visits for Castle Spa, Dining and Afternoon

Tea welcome with pre-booking

Upgrade where possible for Blue Book voucher guests

#### How to find:

Dromoland Castle is located in County Clare, within 15 minutes of Shannon Airport and 15 minutes from the town of Ennis.

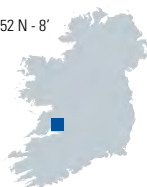
Located just off the M18, Exit 11 travel along the R458.

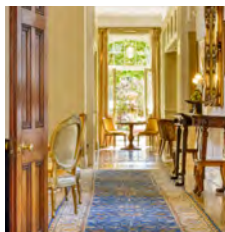
Electric Car Charges on site.

GPS Coordinates: 52° 46.52 N - 8° 54.17 W

#### GPS coordinates

52° 46.52 N  
- 8° 54.17 W





Indulgence is the order of the day at Dunbrody Country House with gourmet restaurant, chic champagne seafood bar and leisurely breakfasts. Couple this foodie focus with their aim to please and you'll understand Dunbrody's desirability.

In 300 acres of parkland on the idyllic Hook Peninsula on Ireland's south coast, 1830s Dunbrody is the perfect year-round getaway to the country. Relaxed elegance & country house chic with individually-styled rooms, very much in keeping with the hotel's Georgian origins and late breakfast make it easy to avail of long, lazy lie-ins...

For the culinary inquisitives there's the temptation of Kevin Dundon's cookery school with choice of 1, 2 & 5 day courses. For those seeking the ultimate hideaway, why not try their estate lodges or the woodland retreat – The Cosy Cabin. The perfect choices for those looking to chill out and indulge in me-time away from it all!

Bedrooms **22** including Suites and Guest Lodge

Hotel ★ ★ ★ ★

**Dunbrody Country House Hotel,  
Arthurstown, Y34 R597 Co. Wexford**

T +353 (0)51 389600

F +353 (0)51 389601

info@dunbrodyhouse.com

www.dunbrodyhouse.com

**How to find:**

M11/N11 from south Dublin and then the R733 to Arthurstown.

M9 from north Dublin to New Ross and then the R733 to Arthurstown.

N25 from Cork/Waterford and exit after Rose Kennedy Bridge onto R733 to Arthurstown.

**Directors: Catherine & Kevin Dundon**

B&B from €95 – €195 pps low season,

€145 – €265 pps high season.

Weekends 2BB1D from €325pps low season and

€350 pps high season.

Single Supplement €25 per night on standard double rooms.

Dining Options: The Harvest Room Restaurant, the Champagne Seafood Bar and the Local GastroPub.





Hidden among the woodlands at the foot of Nephin Enniscoe House overlooks the great western lake, Lough Conn. The estate has been in the family since the 1650's and the classical Georgian house dates from the 1790's.

Susan Kellett and her son DJ welcome guests to their elegant and romantic home. There are grand reception rooms and bedrooms with stunning views over lake and parkland. Explore the restored Victorian garden and the miles of woodland and lakeside walks. Located in the old orchard Enniscoe Organic Garden supplies the house with fresh fruit and vegetables.

Close to the Wild Atlantic Way, links golf courses, trout and salmon fishing and walking trails Enniscoe is the perfect base for you to explore the West of Ireland.

**Green Flag** award winner 2023.

**Heritage Flag** award winner 2022.

**Georgina Campbell's** Country House of the Year 2021.

*Where delicious things begin.* Catherine Cleary, Irish Times.

## Bedrooms 6

## Specialist accommodation **Historic House**

### **Enniscoe House, Castlehill, Ballina, Co. Mayo, F26EA34**

T +353 (0)96 31112  
mail@enniscoe.com  
www.enniscoe.com

#### **Proprietor: Susan Kellett and DJ Kellett**

Open 1st April to 31st October.  
Bed and breakfast from €120 – €170 pps.  
Dinner €55 at 7.30/8.00pm.  
Single supplement €30.  
Dogs welcome.

#### **How to find:**

Enniscoe is 3.2 km south of the village of Crossmolina on the R315 to Pontoon and Castlebar. It is 15 km from Ballina.

Ireland West Airport Knock 50 km.

#### **GPS coordinates**

Lat. 54.070156  
Long. -9.309334



# THE ESTATE AT DROMQUINNA

29



Welcome to the Dromquinna Manor Estate, a 40-acre waterfront setting that feels as if it is a million miles away from the rest of the world. The estate with its extensive woodland and rolling grounds is sprinkled with a unique collection of places to stay from Luxury Camping, Estate Houses, The Hideaway, Potting Sheds to the Courtyard Mews. The Manor's Oak Room is home to bespoke weddings and private parties up to 180 people.

Lovingly restored each home has a unique character. If Dromquinna is breathtakingly beautiful on the outside, step inside and you will find another world. The estate is also home to the Nantucket inspired Boathouse Bistro which serves a selection of dishes mostly from around the area.

Our Safari style tents allow guest to connect with nature without foregoing the creature comforts. Sleep in a real bed with cool crisp linen and admire breathtaking views of the Wild Atlantic Way. Enjoy a delicious continental breakfast hamper delivered to your private veranda each morning.

It is unlike any place you have ever been before.

---

## **The Estate at Dromquinna, Kenmare, Co Kerry, V93 PK83**

Accommodation : T +353 (0)64 66 42888  
Boathouse Bistro: T +353 (0)64 66 42889  
admin@dromquinnamanor.com  
www.dromquinnamanor.com

## **How to find:**

5km from Kenmare on the N70.

## **GPS coordinates**

N 51.870462  
W -9.64322

## **Proprietors: John & Gwen Brennan**

Open Accommodation Easter – end October.  
Boathouse open February – end November  
(weekends in shoulders).  
Rates from €195 per night.





# FERNHILL HOUSE & GARDENS

COUNTRY HOUSE HOTEL

30



You will discover wonderful West Cork while savouring magnificent food, service and splendour at the award-winning Georgian Mansion House of Fernhill.

Every part of your experience at Fernhill is inspired by their gardens from your food, décor, floral displays, cocktails and more. The gardens at Fernhill are among the finest in Ireland and were designed by Chelsea Gold Medal winner, Mary Reynolds.

Fernhill is the perfect place for you to explore West Cork with its many walks, scenic drives, beaches, islands, Michael Collins sites, West Cork Garden Trail and many more making it a fantastic break away for you to enjoy.

'The 5th Best Hotel in Ireland' on **TripAdvisor**, 2024.

'Fab 50 Places to Stay' **Irish Independent**, 2023.

'Most Sustainable Business' **Pure Cork**, 2022.

'Ireland's Best Wedding Venue' **Gold Medal Catering Awards**, 2023.

'Best Wedding Ceremony Venue in Ireland' **RSVP Magazine**, 2025.

Bedrooms **27**

Hotel ★ ★ ★ ★

**Fernhill House & Gardens,  
Clonakilty, West Cork, P85 X322.**

**The Wild Atlantic Way**

T +353 (0)23 883 3258

info@fernhillhousehotel.com

www.fernhillhousehotel.com

#fernhillhouse – Facebook/Instagram/

Twitter

## How to find:

Just 45km from Cork city and airport, less than 5 minute drive from colourful Clonakilty town. You can enjoy easy access to the Wild Atlantic Way, beaches, scenic coastal routes of West Cork and more.

**Proprietors: The fourth generation of the  
O'Neill Family at Fernhill**

Open year round.

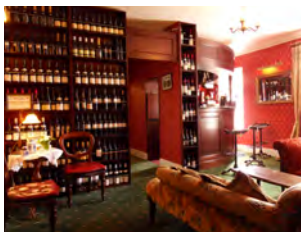
Accommodation from: €85pp.

Golden years offers available.

Weddings from fifty people to over three hundred.







Built in 1727, Ghan House is a listed Georgian House & Restaurant within 12 acres of walled mature gardens & horse fields.

Just a tree length away from medieval Carlingford – with its narrow streets, town gate, castles, priory & ancient walls – a stone's throw from Carlingford Lough. We've 2 car charging points & 1 hour from Dublin & Belfast.

The 2 AA Rosette restaurant utilises the herb & vegetable gardens & celebrates its position;- on Carlingford Lough with the local seafood & mountain lamb/beef.

Whether you stay in the old house or the garden bedrooms, views of Carlingford Lough, the Mourne Mountains or Slieve Foy are standard. Mountain walks, Carlingford Greenway, Scenic Carlingford Ferry.

Awards: 2 **AA** Rosettes since 2011, **4\* AA** accommodation.

**John & Sally McKenna's** "Best 100 Places to stay in Ireland" since 1999.

**'Alastair Sawday' & 'Georgina Campbell'** guides since 1999.

National winners **AA** Guest Accommodation of the Year 2020.

## Bedrooms 11

## Specialist accommodation **Historic House**

### **Ghan House, Carlingford, Co.Louth, A91 DXY5**

T +353 (0)42 937 3682

info@ghanhouse.com

www.ghanhouse.com

#### **Proprietor: Paul & Joyce Carroll**

Open all year.

(Closed 24 – 26th, 31st December & 1st & 2nd January).

Special midweek & weekend dinner & B&B breaks.

B&B from €110 pps – €140 pps.

4 course dinner €65, most nights 6pm – 9.30pm.

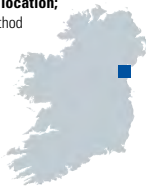
All major credit cards accepted.

No service charge. Gratuities at discretion of guests.

#### **How to find:**

Take junction 18 on main Dublin to Belfast M1 to Carlingford. On the left, 10 metres after 2nd 50kph sign on entrance to Carlingford is a stone entrance & gravel drive to Ghan House.

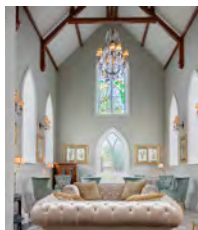
**www.what3words.com** location;  
continually.unbeatable.method



# GLENLO ABBEY HOTEL & ESTATE

COUNTRY HOUSE HOTEL  
& RESTAURANT

32



A warm welcome awaits you at the 5-star Glenlo Abbey Hotel & Estate. This luxury hotel is nestled on a stunning 138-acre estate overlooking Lough Corrib, just a short drive from Galway City centre. Dine aboard the multi award-winning Pullman Restaurant set on Two original carriages from the Orient Express. Alternatively guests can enjoy a more casual dining experience in Palmers Bar & Kitchen.

Enjoy the stunningly restored 18th Century Abbey, perfect for a pre-dinner drink. Take time to relax in one of the many lounges and gardens, or enjoy a signature treatment in Glo Spa & Wellness. On the Estate Grounds there is so much to see and explore from Golf, Falconry, Fishing, or perhaps the Abbey Movie Theatre, you'll be spoiled for choice.

Awards include:

**Irish Independent** Readers Choice Award – Hotel of the Year.

**Hotel & Catering Review** Gold Medal Awards Ireland's Best Five Star Hotel.

**Conde Nast** Readers Choice Award.

Bedrooms **67** Suites **6**

Hotel ★ ★ ★ ★ ★

## **Glenlo Abbey Hotel & Estate Bushypark, Galway, H91 XD8K**

T +353 (0)91 519600

stay@glenloabbey.ie

www.glenloabbeyhotel.ie

**Proprietors: John and Marie Lally  
General Manager: Rónán O'Halloran**

Bed and Breakfast from €269 per room, per night.

### **How to find:**

From Galway City, take the N59 towards Connemara. The hotel is located 2 miles/ 4 kms from the city centre. After passing Bushypark church the hotel entrance is on the right hand side of road.

### **GPS coordinates**

Lat: 53.300406

Long: -9.098559000000023





Grovers Alley by Andy McFadden, a contemporary, refined dining room overlooking the iconic St Stephen's Green in Dublin was awarded its first Michelin star in the 2022 Michelin Guide Great Britain & Ireland. This was retained for 2024 as the restaurant continues to delight and excite diners with its wonderful fusion of great local Irish produce coupled with a little French inspiration. The restaurant is located in a 1930s-inspired first floor dining space at the five star Fitzwilliam Hotel. This 70-seater restaurant is best known for Andy McFadden's creative menus, unique setting and ambience, excellent service and unique wine list. Vegetarian and vegan menus are also outstanding.

Michelin Star, 2022 **Michelin Guide Great Britain & Ireland.**

Best Chef in Ireland – Andy McFadden & Team, 2018 **Food & Wine Awards.**

Best Chef in Dublin – Andy McFadden & Team, 2018 **Food & Wine Awards.**

Best Newcomer – Grovers Alley by Andy McFadden, 2018 **Hotel & Catering Gold Medal Awards.**

**Grovers Alley by Andy McFadden**  
**1st floor of The Fitzwilliam Hotel**  
**128 St Stephen's Green, Dublin 2**  
**D02HE18**

T +353 (0)1 244 0733  
info@groversalley.com  
www.groversalley.com

**Proprietor: Andy McFadden**

Closed Sundays & Mondays.

Lunch service: 12.30pm – 2.00pm Wednesday to Saturday.

Dinner service: 6pm – 9.00pm Tuesday to Saturday.  
Lunch: €70 for three course menu.

€85 for four course lunch tasting menu.

Dinner: €110 for three course À La Carte Menu.

€125 for four course surprise menu.

€150 for six course Tasting Menu.

€250 per person with Classic Wine Pairing

€300 per person with Prestige Wine Pairing.

€170 for six course Grovers Alley Classic menu

**How to find:**

Grovers Alley by Andy McFadden is located at 128 St Stephen's Green, Dublin 2, Ireland on the first floor of The Fitzwilliam Hotel.

**GPS coordinates**

53.3393579

-6.2614846





With breath taking views across Galway Bay and idyllically situated overlooking the unique Burren landscape, this is the ultimate West of Ireland luxury, gourmet and eco hideaway. Simon and Freddie Haden together with General Manager Éanna manage this oasis of comfort and offer genuine Irish hospitality, award winning innovative cooking and elegant bedrooms free from the intrusion of televisions. Antiques, an eclectic art collection, open fires, candles, jugs of flowers and Lady the cat add to the indulgently relaxing atmosphere.

Located on the Wild Atlantic Way and the Burren Food Trail. The only luxury hotel in a uniquely central location from which to enjoy the Burren, the Cliffs of Moher, Walking, Cycling, The Aran Islands, Horse Riding, Surfing, Sea Kayaking, Sea Angling & Golf at nearby Lahinch or Gort.

Recent Awards: **Small Luxury Hotels of the World** Considerate Collection 2024, **Burren & Cliffs of Moher Geopark** Emerald Award 2024, **Irish Restaurant Awards** Best Hotel Restaurant Munster, **Georgina Campbell Guides** Sustainability Award, **Good Hotel Guide** Editor's Choice Romantic Award and Hotel for Walkers.

Bedrooms **14** Suites **7**

Hotel ★ ★ ★ ★

### Gregans Castle Hotel, The Burren, Ballyvaughan, Co. Clare, H91 CF60

T +353 (0)65 707 7005

stay@gregans.ie

www.gregans.ie

**Proprietors: Simon Haden and  
Frederieke McMurray**  
**General Manager: Éanna Hassett**

Bed & Breakfast from €345.00 per room per night for two persons sharing. Check our website for special offers and book direct for best rates.

Dinner from €95.00.

Open from February 14th to November 29th inclusive.

### How to find:

On N67, 5km south of Ballyvaughan village. 1 hour from Shannon Airport and 2½ hours from Dublin. We have 3 electric car chargers on-site and e-bikes for rental.

### GDS codes:

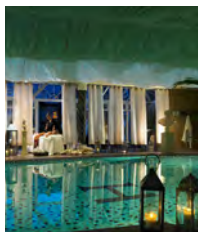
Amadeus: LX SNN738

Galileo/Apollo: LX 26481

Sabre: LX 49257

WorldSpan: LX 10738





Nestled within secluded gardens, Cork's premier 5 star hotel, Hayfield Manor provides the charm of a country house within the vibrant city of Cork. Splendid rooms and suites are classically styled and individually decorated. Guests with a penchant for exquisite food should sample the local fare showcased in the gourmet restaurant, Orchids, and in the contemporary dining space, Perrotts Garden Bistro. A delightful white-glove Afternoon Tea is also served Thursday–Sunday.

The Beautique Spa features Elemis Spa Therapy & GROUND Wellbeing, with pool, sauna, steam room & resident's gym. The concierge will assist you to discover the unique attractions of Cork city and county.

Awards include:

**Hotel & Catering Review** Gold Medal Awards Ireland's Best Five Star Hotel, **Georgina Campbell's** Ireland Hotel of the Year, **Fodor's** Choice Award, **Tripadvisor** Traveller's Choice Award, **Conde Nast** Reader's Choice Award.

## Bedrooms 88

Hotel ★ ★ ★ ★ ★

### Hayfield Manor, Perrott Avenue, College Road, T12 HT97, Cork City

T +353 (0)21 484 5900  
enquiries@hayfieldmanor.ie  
www.hayfieldmanor.ie

#### Proprietors: Joe and Margaret Scally

Open all year round.  
Manor Rooms: from €130 pps.  
Superior and Deluxe Rooms also available.  
Suites: from €445 – €1,100pps.  
Perrotts Garden Bistro: A la Carte.  
Orchids: €79 per person.  
Afternoon Tea: Thurs – Sun from 1.00pm.  
Private dining available.  
Service charge of 10% on 8 people or more.  
All major credit cards accepted.

Wheelchair accessible rooms available.  
Interconnecting Family rooms available.

#### How to find:

6 miles from Cork International Airport (ORK), 80 miles from Shannon International Airport (SNN). Hayfield Manor is located off College Road, opposite University College Cork.

#### GDS codes:

Amadeus PH ORKMHM  
Worldspan PH ORKHM  
Galileo/Apollo PH 78441  
Sabre PH 31327

#### GPS coordinates

N 51.89102  
W -8.48953







Ireland's oldest coaching inn, in the 5th generation of the same family. Its picturesque gardens along the banks of the river Vartry provide a delightful setting for afternoon tea or a drink.

An ideal base from which to visit Mount Usher, Powerscourt, Russborough, Killruddery, Kilmacurragh, Avondale and Glendalough in County Wicklow. 'The Garden of Ireland'.

There are fifteen 18-hole golf courses nearby, most notably Druid's Glen and the European. Horse riding and hill walking can be arranged. Conference facilities available. Hunter's is approximately 60 minutes drive from Dublin, 135 minutes from Belfast and 90 minutes from Rosslare.

## Bedrooms 16

## Specialist accommodation **Hotel & Restaurant**

### **Hunter's Hotel, Newrath Bridge, Rathnew, Co. Wicklow A67 TN30**

T +353 (0)404 40106  
reception@hunters.ie  
www.hunters.ie

#### **Proprietors: The Gelletlie Family**

Closed from end December 2024 to mid March 2025.

Bed & Breakfast from €120 per person.

Dinner from €42.50 per person – served from 19.30 to 20.30.

Lunch from €39.50 per person – served at weekends & on Bank Holidays.

Lunch served on Saturdays from 13.00 and on Sundays at 12.30 and at 14.45.

Afternoon Tea from €30 served from 13.00 to 17.00 weekdays & from 16.30 to 17.30 weekends.

#### **How to find:**

**From Dublin:** Take exit 15 for Ashford off the N11. Turn left at the bridge in Ashford. Then 2km.

**From Wexford/Rosslare:** Take exit 16 for Ashford off the N11. Pass Mount Usher Gardens. Turn right at bridge in Ashford. Then 2km.

#### **GPS coordinates**

N 53.006374  
W -6.084328







Overlooking the majestic River Moy, a stay at The Ice House is your opportunity to retreat, rest and renew. A restful sanctuary. An inspired blend of the classic and the contemporary. A haven of creativity. A warm and welcoming place to meet, eat and relax in harmony with our spellbinding surroundings...

With exquisitely soothing treatments blended with wonderfully therapeutic indoor and outdoor suites and facilities, Chill Spa is a luxurious oasis of calmness, simplicity and well-being and a must experience during your stay.

On the Wild Atlantic Way, it's the perfect springboard to experience North Mayo's untamed landscapes and centuries of history and culture cohabit with high-octane surfing, sedate strolls, blissful beaches, some of Ireland's finest fishing as well as golf courses a plenty.

**Reader Travel Awards 2023** "Ireland's Top 10 Spas in 2023"

**Irish Independent** "Irish Independent "Ireland's 100 Best Hotels 2022 & 2023"

**Irish Times Fab 50:** Ireland's 50 Best Places to Stay in 2020.

## Bedrooms 32

Hotel ★ ★ ★ ★

### The Ice House, The Quay, Ballina, Co. Mayo F26 Y9E8

T +353 (0)96 23500

chill@theicehouse.ie

www.theicehouse.ie

#### Proprietor: Pearse Farrell

Open all year round.

(Closed 23 – 26 December).

Low season from €120pps B&B.

High season from €180pps.

Dinner served 6pm to 9pm, €65pp.

Bistro Menu served 1pm to 9pm.

Afternoon Tea served from Wednesday –

Saturday only, 2pm to 5pm, from €29pp.

Children welcome.

#### How to find:

From Dublin – Follow N4/M4 route direction Sligo. At Longford follow N5 route direction Westport. Turn right onto N26 outside Swinford going through Foxford on to Ballina. On arrival in Ballina, follow N59 direction Sligo through the town and across the river. Turn left at traffic lights onto Quay Road. The Ice House is located ca. 1km on The Quay.





Killarney Royal is a luxury 4 star boutique hotel situated in the heart of Killarney town centre and is the ideal abode from which to explore the bustling town. Killarney Royal provides luxurious and spacious accommodation and the attentive and dedicated team deliver excellent personal service.

Exceptional gourmet cuisine is offered in both the elegant Candle Room Restaurant and in The Royal Bar & Bistro where you will find the highest quality of local food, making Killarney Royal the ideal choice for a celebration gathering. With an á la carte menu featuring traditional Irish cuisine there is something to tempt and please everyone.

Awards include:

**IGTOA** Boutique Golf Hotel of the Year Award.

**TripAdvisor** Travellers Choice.

Bedrooms **32**

Hotel ★ ★ ★ ★

**Killarney Royal, College Street,  
Killarney Town, V93 XC90, Co. Kerry**

T +353 (0)64 6631853

F +353 (0)64 6634001

reception@killarneyroyal.ie

www.killarneyroyal.ie

**Proprietors: Joe and Margaret Scally**

Closed 24, 25, 26 December.

Royal Rooms: €74.00 – €165.00pps.

Superior, Deluxe and Royal Suites also available.

Suites: From €105pps.

The Royal Bar & Bistro: A la Carte.

The Candle Room Restaurant: €50.00 per person.

Afternoon Tea: €32.00 per person.

Private dining available.

Service charge of 10% on 8 people or more.

All major cards accepted.

Free town centre parking.

#### How to find:

140 meters from Killarney train station

11mi /17km From Kerry International Airport

54mi /87km From Cork International Airport

84mi /135kms From Shannon International Airport

**GDS Codes:** Amadeus: LM KIR170,

Galileo/Apollo: LM 38135,

Sabre: LM 060601,

WorldSpan: LM 08170

#### GPS coordinates

N 52.059787

W -9.506131





Located in the picturesque fishing village of Howth, established in 1971, the MacManus family has built an international reputation for warm hospitality alongside fresh local seafood. With only 10 bedrooms, named after lighthouses, all enjoy sea views. At breakfast you might see our local fishermen Ted & Paul fishing for Lobster & Crab right outside in Balscadden Bay – which you can then enjoy in our Seafood Bar. Howth is part of the UNESCO Dublin Bay Biosphere, hike the famous Cliff Path. Other activities locally include golf, sailing, paddle boarding & sea swimming. Think of King Sitric as a seaside alternative to Dublin City & Dublin Airport!

### Celebrating 50 Years 1971 – 2021

Awards include: **Food & Wine** – Hall of Fame: Aidan & Joan Mac Manus.

**John & Sally McKenna's** Best Places to Stay 2019.

**Georgina Campbell** King Sitric & East Café Bar Seafood Restaurant of the Year 2020.

Bedrooms **10**

Guesthouse ★ ★ ★ ★

**King Sitric Seafood Bar & Accommodation, East Pier, Howth, Co.Dublin D13 F5C6**  
T +353 (0)1 832 5235  
reservations@kingsitric.ie  
www.kingsitric.ie

#### Proprietors: The MacManus Family

Bed & Breakfast from €180 per double room.  
Babies and children welcome – under 12s sharing with parents free.  
Well behaved dogs by arrangement.  
Check website for seasonal closure.

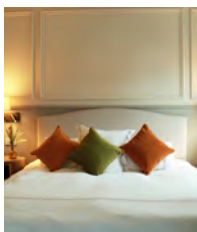
#### How to find:

Coming in to Howth, all the way across the harbour front to the end of the road, top of the far pier.

#### GPS coordinates

Latitude 53.23 18 N  
Longitude 06.03 48 W





The Lansdowne Kenmare is an intrinsic part of the history of Kenmare since 1790. Totally restored in 2021, this Town House hotel boasts a prime perch overlooking the Heritage Town of Kenmare, with colourful streets filled with cafés, restaurants, quaint shops, and traditional pubs. The Lansdowne Kenmare with its quirky twists and atmosphere offers real Irish hospitality, featuring all the facilities one would expect from a stylish property including the An Nead Café, Shelburne Street Restaurant & Moeran's Bar and The Poet's Bar hosting renowned traditional musicians on a weekly basis. Our passion for food in our restaurant and café is translated in our menu, focusing on local fresh produce, flavours and colours. It is simply prepared and cooked to invoke feelings of nostalgia in our guests.

The twenty-eight bedrooms are comfortable, and fresh to add a contemporary feel to this iconic hotel. Kenmare is long famed as a destination, now it has a very stylish and hospitable address for you to call home.

## Bedrooms 28

**The Lansdowne Kenmare,  
Corner of Main and Shelbourne St,  
Kenmare, Co Kerry, Ireland, V93 YRC8**

T +353 (0)64 6640 200

Info@LansdowneKenmare.com

www.LansdowneKenmare.com

**Proprietors: Aileen & Patrick Hanley**

Closed December 23rd – 27th.

Rates from €220 – €315.

### How to find:

**By Air:** Kerry Airport 40km. Cork International Airport 100km. Shannon International Airport 160km. **By Rail:** Killarney Train Station located

30km from Kenmare. **By Road:** Check AA Route Finder for all routes and updated road information. If traveling from Dublin it is advisable to travel from Dublin to Cork and then follow the signs for Tralee and Kenmare.

### GPS Coordinates:

N 51° 8'790 & W 9° 58'15

Helicopter Coordinates

N 51°52.64' / W 9° 34.81'

or N 51.877° / W 9.580°

Land on the front lawn of

our sister property Park

Hotel Kenmare to the

right of the pony field.





Nestled on the southern coast of West Cork, Liss Ard Estate captures the charm of the Irish countryside, surrounded by century-old cypresses and manicured garden and located on 163 acres with a 40 acre private lake. This Georgian manor offers 26 bright, modern country-style guest rooms across three unique buildings.

Its restaurant focuses on seasonal produce from the garden and locally sourced meat and fish for a farm-to-table experience. Built in 1853, the estate has a rich history involving Irish aristocracy, spies, and musicians.

Enjoy the Lakeside Wellness Centre with 14 treatments, saunas, yoga, and outdoor activities, including kayaking on the private lake and exploring 12km of trails. The Estate also offers a wide range of experiences and activities both on and off-property and some of the most authentic excursions in West Cork nearby.

Awards include: **The Irish Independent** No. 6 in its Fab 50 hotels.

No. 1 in Ireland's Top 10 stays for 2022 from **The Irish Examiner**.

**Global Globes** 2024 Gift Bag. **Financial Times** "5 Glorious Homes in Ireland".

[Bedrooms/Suites 26](#)

[Luxury Georgian Manor](#)

**Liss Ard Estate, Castletownshend Road, Skibbereen, Co.Cork P81 NP44**

T:+353 (0)28 40000

[reservations@lissard.com](mailto:reservations@lissard.com)

[www.lissardestate.ie](http://www.lissardestate.ie)

#### How to find:

Liss Ard Estate is two minutes from Skibbereen. From Cork please follow the N71 to West Cork & Skibbereen. Please to note navigate off the N71 until you reach Skibbereen (Google Maps will offer alternative back country routes that are longer).

#### GPS coordinates

51.532348250305326 (Latitude)  
-9.249801635742188 (Longitude)

Open all year round.

Rooms from €220.

À la carte Dinner, 3 course from €45pp.

Dinner: Served Daily, 6pm – 9pm.

Lunch: Served Daily, 12:30 – 2:30pm.

Brunch: Served Sunday, 12pm – 4pm.

Open all year for weddings, groups and special events.

Dog friendly.







Set on 36 acres of grounds and just one hour south of Dublin, Marlfield House is a romantic and charming country house hotel. Choose from classic or state bedrooms in the house, the renovated lodge or one of the recently built pond suites. Set in a lush wooded setting overlooking the duck pond with large open plan interiors, the pond suites are the epitome of a modern country house experience with a low carbon emission.

Marlfield offers two award winning restaurants – the original Conservatory Dining Room with its frescoed walls offers country house fine dining including afternoon tea, Sunday lunch and dinner. Set in original courtyard buildings with south facing terrace overlooking the kitchen garden The Duck Restaurant is a more casual dining option. Marlfield also hosts exclusive use weddings, corporate events and meetings. Delicious food, luxurious surroundings and charming service prevail. Always mention when using a Blue Book Voucher for treats and possible upgrades.

Awards: **Gold Medal Awards** Best Designed Hotel & Best Breakfast & Best Boutique Hotel, **Georgina Campbell** Boutique Hotel and Gardens 2021.

**Bedrooms 18** Gate lodge with 2 bedrooms **5 Duck Pond Suites**

### Marlfield House, Courtown Road (R742), Gorey, Co.Wexford

T +353 (0)53 94 21124

info@marlfieldhouse.ie

www.marlfieldhouse.com

#### Proprietor: The Bowe Family

#### General Managers: Margaret and Laura Bowe

Open all year for weddings and special events.

B&B per room per night

Manor house bedrooms €250 – €290 per night.

State bedrooms €440 – €790 per night.

The Gate Lodge €580 – €700 per night.

Duck Pond suites €440pm – €500pm.

The Duck Restaurant: Lunch from €38, Dinner from €50.

Conservatory: Sunday lunch from €59,

Dinner from €83.

Afternoon Tea from €45.

Check website for opening times.

#### How to find:

Marlfield is 1 hour, 75km south of Dublin off the N11 and is located just outside the town of Gorey on the Courtown Road R742.

From Exit 23 on the N11 follow signs for Courtown, at Courtown Road roundabout turn left for Gorey. Follow signs for Marlfield.

#### GPS coordinates

N 52 40 06

W 06 16 46







The Merrion, Dublin's most stylish 5 star hotel is situated opposite Government Buildings in the city centre. Created from four Georgian Townhouses and a contemporary Garden Wing, the 142 bedrooms and suites are arranged around beautifully manicured gardens. Stunningly restored interiors provide the backdrop for one of Ireland's most impressive art collections.

Guests have the choice of two bars and two restaurants, including The Garden Room and the 2 Michelin starred – Restaurant Patrick Guilbaud.

Additional features include Georgian Drawing Rooms where Art Afternoon Tea is served daily, and The Merrion Spa and Health Club which boasts an 18m pool, gymnasium, steam room, sauna and treatment rooms.

**TripAdvisor's** Travellers' Choice No 1 hotel in Ireland for 2024.

'Best Dublin City Hotel' in the **Travel + Leisure World's Best Awards** 2024.

Bedrooms **142**

Hotel ★ ★ ★ ★ ★

**The Merrion Hotel,  
Upper Merrion Street, Dublin 2**

T +353 (0)1 603 0600  
info@merrionhotel.com  
www.merrionhotel.com

**General Manager: Peter MacCann**

Published Rates:  
From €370 to €4,500 per room, per night.  
Subject to availability and season.

**GDS Code:** LW8430.

**How to find:**

Located in Dublin city centre on Upper Merrion Street, opposite Government Buildings.

**GPS coordinates**

Lat: 53.338596  
Long: -6.252956





Mount Juliet Estate offers a sanctuary of refined luxury across 500 acres of pristine gardens and woodlands. The elegant 18th-century Manor House embodies timeless grandeur, while the contemporary Hunter's Yard provides a sophisticated, relaxed retreat.

Indulge in exceptional leisure, from the championship golf course to the Michelin-starred Lady Helen restaurant, where culinary artistry meets impeccable service. Guests can enjoy equestrian pursuits, outdoor adventures like laser clay shooting, archery, and hiking, or unwind in serene treatment rooms.

Whether for a romantic escape or an exclusive getaway, Mount Juliet Estate promises an unforgettable experience of prestige and charm.

Awarded a **Gold Medal Award** for Five Star Fine Dining 2024.

Awarded a **Gold Medal Award** for Grand Wedding Hotel 2024.

Best Overall Resort Europe **59Club** 2024.

Bedrooms **125**

Luxury Country House & Estate ★ ★ ★ ★ ★

### Mount Juliet Country Estate, Thomastown, Co.Kilkenny

T +353 (0)56 777 3000  
reservations@mountjuliet.ie  
www.mountjuliet.ie

#### Proprietors: Tetrarch Capital

Open all year round.

Low season from €150 per person sharing.

High season from €200 per person sharing.

#### How to find:

From Dublin, take the N7/M7 (Naas Road). Branch onto the M9 signposted "Waterford, Carlow & Kilkenny" which is Exit 11 on the M7. Follow the M9 and take Exit 9 signposted "Kilkenny/Stoneyford". At the top of the ramp turn left onto the N10 heading for Stoneyford. Drive straight through the village of Stoneyford and at the end of the village at the fork in the road (at the school) take the left-hand turn signposted "Mount Juliet 4km". After 4km, Mount Juliet will be on the left.

#### GPS Coordinates:

52.5262° N, 7.1895° W





Nestled in the heart of the Golden Vale, this oasis of pastoral paradise overlooks the rustic village of Ballingarry. On the doorstep to Adare, the restaurant is legendary with superb food and quintessential country house hospitality. Sitting on twelve acres of manicured gardens, the eclectic, heritage hideaway is the perfect venue for romantic escapes, special occasions and intimate weddings.

The house looks across at Knockfierna, the highest peak in the Mid West landscape, the perfect trek for even the amateur walker. Close to Lough Gur, one of Ireland's finest archaeological and historical gems. Ten minutes from the Great Southern Greenway.

*'a dream world, a perfect country house, sublime comfort; relaxed style; beautiful cooking; warm hospitality.'* John McKenna.

Awards include: 'Ireland's Country House & Guesthouse experience' **2023 – Gold Medal Award.** 'Cesar Award 2023' – **Good Hotel Guide.** 'Host of the Year' – **YesChef Awards.** 'Chef of the Year – Angel Pirev' – **Georgina Campbell.** Editor's Choice Country House – **Good Hotel Guide.**

Bedrooms **14** Suites **3**

Hotel ★ ★ ★ ★

**The Mustard Seed,**  
**Ballingarry, Co.Limerick, V94 EHN8**  
 T +353 (0)69 68508  
 info@mustardseed.ie  
 www.mustardseed.ie

**Proprietor/Host: John Edward Joyce**  
 B&B rates: €70 – €175 pps.  
 Single supplement: From €25.  
 Classic House menu: €75.  
 Pets by arrangement.  
 Wheelchair friendly.

#### How to find:

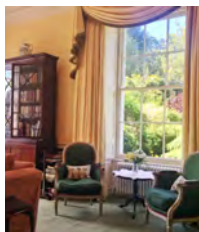
**From Limerick:** From the top of Adare village, take the N21 Killarney road for half a mile. Turn left at the first road junction to the left and follow the signposts for Ballingarry village.

**From Kerry:** Travel along the N21. Look for signs for Rathkeale. In Rathkeale town, follow the R518 for four miles to Ballingarry village.

#### GPS coordinates

Lat: 52.474672  
 Long: 8.86469





A charming Georgian Country House nestled amidst lush gardens and woodlands bordering County Armagh and Down, Newforge House offers guests an intimate, luxurious escape with just six beautifully appointed rooms.

Newforge has won many awards for its exceptional hospitality and farm-to-table dining, showcasing locally sourced ingredients. Guests can indulge in a tranquil retreat enjoying delicious meals, cosy firesides, and serene countryside views.

Ideal for romantic getaways, special occasions, or as a base for exploring vibrant Belfast, Armagh's historical cathedrals, the stunning Mourne Mountains, and the tranquil beauty of Strangford Lough.

Awards include:

**RAI:** Best Hotel Restaurant.

**McKenna' Guides:** Top 100 Places to Stay in Ireland.

## Bedrooms 6

Guesthouse ★ ★ ★ ★ ★

### Newforge House, 58 Newforge Road, Magheralin, Co. Armagh, BT67 0QL

T +44 (0)28 926 11255

enquiries@newforgehouse.com

www.newforgehouse.com

#### Proprietor: John & Louise Mathers

Bed & Breakfast from £195 per room.

Dinner Bed & Breakfast from £295.

Midweek, weekend & multiple-night breaks available.

Available for private hire.

4 Course Dinner served at 8pm Tues – Sat.

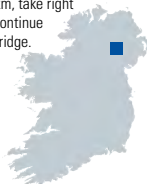
#### How to find:

From Belfast: M1 West, exit 9, Moira follow 5km. In Magheralin left at Byrne's pub: left after national speed limit sign.

From Newry: A1 north towards Belfast. Follow c. 30km, exit Dromore onto B2 (Lurgan Road). Continue 8km, take right onto Newforge Road B9. Continue 1km: 200m on right after bridge.

#### GPS coordinates

N 54.4619 W -6.2577





Overlooking the handsome, tree-lined Peoples Park in Limericks historic Georgian neighbourhood, No.1 Pery Square is a luxurious and intimate boutique townhouse. Situated just 5 minutes' walk from the city centre and bus station.

The house comprises of 20 bedrooms all individually named and styled. Delicious food and wine served daily & afternoon tea served on weekends. No.1 also houses an organic VOYA Spa tucked away in the vaulted cellar, and its very own kitchen garden, rooms full of personality and style throughout.

Owner operated and open all year. Guests can enjoy the wonderful Peoples Park, Hunt Museum, King Johns Castle and Riverside Walks.

Top 10 hotels in Ireland, **Irish Independent 2023.**

Best Facial & Boutique Spa Award **Tatler.**

Best 100 Wedding Venues **One Fab Day.**

Editor's Choice Boutique of The Year 2018 **The Good Hotel Guide.**

Hotel of the Year 2020 **Georgina Campbells.**

Best in Ireland 2020 **McKenna's Guide.**

## Bedrooms 20

### No.1 Pery Square Townhouse & Spa Georgian Quarter, Limerick, Ireland V94EKP9

T +353 (0)61 402402

info@oneperysquare.com

www.oneperysquare.com

#### Proprietor: Patricia Roberts

Club rooms from €95 – €185pps.

Period rooms from €135 – €195pps.

Townhouse Suite €195 – €295pps.

Special Midweek and weekend packages available.

Private dining lunch & Dinner menus from €45pp.

Evening light bites Sunday to Wednesday and

Long room dinner Thursday to Saturday.

Afternoon Tea Served Saturday and Sundays from €39pp.

Spa operates 7 days a week and is open to non residents.

#### How to find:

Shannon Airport – 27.5km,

Cork Airport – 100km,

Dublin Airport – 200km,

2 mins walk to O'Connell Street, Bus and train Station.

5 mins walk to Shopping.

#### GPS coordinates

52° 39' 29.12" N

8° 37' 48.17" W







Nestled in the charming village of Crawfordsburn in the picturesque County Down, just 15 minutes from Belfast and 5 minutes from the seaside town of Bangor, The Old Inn is the perfect escape. Dating back to 1614, The Old Inn is celebrated as one of Ireland's most historic hotels, famously linked to author and 20th-century literary icon C.S. Lewis, who honeymooned here. The hotel is bursting with character, from its cosy corners and elegant interiors to the stunning views from the Treetop Spa overlooking the beautiful Crawfordsburn Country Park. No visit to The Old Inn is truly complete without indulging in one of our bespoke spa treatments.

With accommodation ranging from petite guestrooms to a suite with a private hot tub and a rustic cottage, there is something for everyone. For gourmet dining featuring the finest local produce, private dining, or drinks in the charming 1614 bar, The Old Inn promises time-honoured hospitality in a historic and unique setting.

## Bedrooms 33

Hotel ★ ★ ★ ★

### The Old Inn, 15 – 25 Main Street, Crawfordsburn, Bangor, BT19 1JH

T : +44 (0)28 9185 3255

reservations@theoldinn.com

www.theoldinn.com

Facebook: theoldinn, Twitter: @oldinn1614

Instagram: theoldinn1614

#### Proprietors: Nicholas and Paul Hill

Open: All year round.

Sunday – Thursday: Petite from £180, Carriage from £205, Highway from £235, Junior Suite from £275, Suite from £325, Cottage from £345.

Friday & Saturday: Petite from £265, Carriage from £290, Highway from £320, Junior Suite from £360, Suite from £410, Cottage from £430.

For exclusive hire, weddings or corporate events, please contact us for rates.

#### How to find:

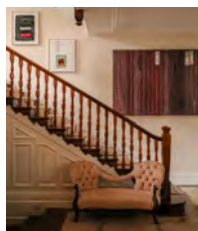
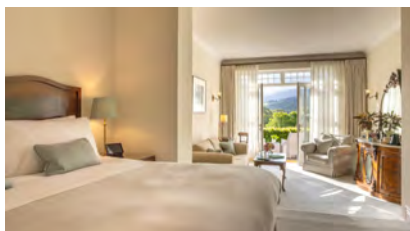
We are located in the village of Crawfordsburn. From Belfast, take A2 to Ballyrobert Road/B20 in Ards and North Down. Turn left onto Ballyrobert Road/B20 and follow signs for Crawfordsburn.

#### GPS coordinates

54.6587° N, 5.7286° W







Park Hotel Kenmare is a celebrated timeless five-star hotel perched steps away from the Heritage Town of Kenmare, overlooking Kenmare Bay, the Wild Atlantic Way, ancient woodlands and the Caha Mountains.

The hotel offers calming rooms and suites, superb dining in our award winning restaurant, Landline, the only Blue Bottle Coffee outpost in Europe, SAMAS Spa, 25m Lap Pool and a host of complimentary guest activities from yoga, bicycles to botanical walks.

You will find wonderful original fireplaces, antique furnishings & walls graced by an inspiring curated collection of Irish and international art from the unique Sean Scully room to Theaster Gates & Dorothy Cross.

Awards include:

**New York Times**, "All Time Bucket List"

**Hospitality Awards** "Best Hotel Restaurant"

**Conde Nast** Top 10 Readers Choice Awards.

Bedrooms **43**

Hotel ★ ★ ★ ★ ★

**Park Hotel Kenmare, Kenmare,  
Co.Kerry, V93 X3XY.**

T +353 (0)64 664 1200

F +353 (0)64 664 1402

info@parkkenmare.com

www.parkkenmare.com

**How to find:**

Heart of Kenmare

**GPS:**

N 51.877849

W -9.580554

**Managing Director: Bryan Meehan**

Open February 1st – December 14th 2025.

Open for Christmas December 23rd – 31st.

Double Twin from €177.50pps to €547.50pps.

Dinner 3 Course from €75.00.

Complementary Daily Activities, Hikes, Walks,  
Yoga, Meditation, 25mt Swimming Pool, Gym,  
Tennis, Gardens, Art Tour.





Perryville House is an elegant, period townhouse overlooking Kinsale Harbour. Built in 1820 and lovingly restored by the Corcoran family, Perryville House is now a warm, and light-filled boutique guesthouse.

True to its original role as a private residence, Perryville House welcomes guests to enjoy the finest Irish hospitality & luxury accommodation – your first stop on the Wild Atlantic Way. We invite you to savour a unique, historic experience.

Enjoy all the culinary delights Kinsale has to offer, including our infamous breakfast and some of Ireland's best restaurants – all within walking distance.

Bedrooms **30**

Guesthouse ★ ★ ★ ★

**Perryville House,  
Kinsale, Co.Cork, P17 RK16.**

T +353 (0)21 477 2731  
sales@perryvillehouse.com  
www.perryvillehouse.com

**Proprietors: The Corcoran Family**

Open Dates: 9th April to 27th October 2025.  
Rooms start at €320 B&B per room.

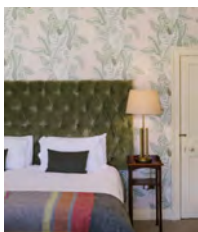
#### How to find:

Drive into Kinsale on the R600 from Cork and Perryville House is the first, large period townhouse located on the right hand side overlooking the harbour.  
20 minute drive from Cork Airport.  
30 minute drive from Cork City.

#### GPS coordinates:

Latitude:  
51.70583155  
Longitude:  
-8.520872700499261





Situated on the shores of Lough Swilly, a short walk through the rolling front lawn, leads you to a 2 mile golden sandy beach. The interior is relaxed and welcoming with open fires burning in the homely lounges.

Bedrooms range from romantic doubles with garden views to large garret rooms for families. A heated indoor swimming pool provides the perfect opportunity to unwind after a day of sightseeing.

In the Cook & Gardener restaurant, you will find locally sourced produce including Donegal landed seafood. Pavilion, an informal outdoor dining space which offers stone baked pizzas and locally brewed craft beer, is busy and bustling with families during the summer months.

## Bedrooms 32

Hotel ★ ★ ★ ★

### Rathmullan House, Rathmullan, Co. Donegal

T +353 (0)74 915 8188  
reception@rathmullanhouse.com  
www.rathmullanhouse.com

#### Proprietor: The Wheeler Family

Open full time from: March to October,  
Winter Weekends, Half Terms & New Year.  
Bed & Breakfast from €100pps to €200pps  
Single rooms available at no supplement.  
Children welcome, busy with extended families  
during holiday times.  
2 course dinner from €52.50pp open 6pm – 8:15pm.  
10% Service charge on extras only.

#### How to find:

From Letterkenny go to Ramelton (R245) and on to Rathmullan (R247). Turn left at butchers, through village heading north and gates are on the right.

#### GPS coordinates

N 55.0989383  
W 7.53266





Converted from Queen Anne stables in 1798, Rathsallagh is a large comfortable house situated in hundreds of acres of peaceful parkland with a walled garden and surrounded by the magnificent Rathsallagh Golf Club, a championship course measuring in excess of 7,000 yards. Also close to Glendalough, the Wicklow mountains, The National Stud (with its Japanese Gardens) and the Curragh, yet Dublin Airport is less than one hour's drive.

Rathsallagh is renowned for the consistency of its restaurant over the past 30 years, showcasing Irish Country House cooking at its best.

Available for private parties and exclusive rental for all events from family celebrations, weddings, incentives to conferences and meetings catering for up to 250 guests.

**Georgina Campbell's** Irish Country House of the Year 2023.

Country House Wedding Venue of the Year 2024 – **Wedding Supplier Awards**.

Exclusive Wedding Venue of the Year Ireland – **Weddings On Line Awards**.

Best Chef in Leinster 2024 at the 2024 **RAI Regional Awards**.

Finalist Irelands Best Wedding Venue – **Gold Medal Awards**.

[Bedrooms 39](#)

## Rathsallagh House, Dunlavin, Co.Wicklow

T +353 (0)45 403112, F +353 (0)45 403343

[info@rathsallagh.com](mailto:info@rathsallagh.com)

[www.rathsallagh.com](http://www.rathsallagh.com)

## How to find:

Signposted from Dunlavin.

Less than 50 mins Dublin airport.

M50 for Kildare / South – N7 South.

Exit jct. 11 for M9 south. Exit jct. 3 left

signposted.

## Proprietors: The O'Flynn Family

Closed 23rd to 26th December.

Bed and Breakfast from €120 to €140 pps.

Dinner from €70. Open for Sunday Lunch

Prior Reservations Essential.

Not open for afternoon tea.

Available for private fully serviced rental.





Established in 1981, Restaurant Patrick Guilbaud is Ireland's top restaurant, holder of two Michelin stars as well as virtually all the top national and international awards. It is situated in an 18th century Georgian Townhouse adjoining the Merrion Hotel. It houses an impressive collection of Irish Art.

This bright, elegant restaurant, run by Stephane Robin, serves modern classic cuisine using the best Irish produce in season. Chef Guillaume LeBrun's Signature dishes include Lobster Ravioli, Challans Duck Breast & Coeur de Guanaja Chocolate Tart.

The wine list is very impressive in both its depth and its range – do take time to peruse it.

Covers Main Dining room **50**, Private hire **85**

**Restaurant Patrick Guilbaud,  
21 Upper Merrion Street, Dublin 2**

T +353 (0)1 6764 192  
info@restaurantpatrickguilbaud.ie  
www.restaurantpatrickguilbaud.ie  
www.rpgmenu.ie

**Proprietor: Patrick Guilbaud**

**Chef: Guillaume Lebrun**

**Manager: Stephane Robin**

Open: Tuesday to Saturday.

Closed: December 25th to January 9th.

Lunch: 12:30 – 2pm. Dinner: 7pm – 9.30pm.

A la Carte available Lunch & Dinner.

Private Dining Roderic O'Connor Room:

Maximum 25 people.

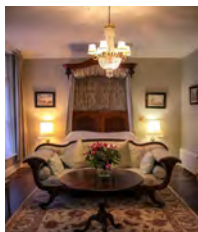
For prices, please see website.

**How to find:**

Opposite Government buildings.  
Merrion Street.







A beautifully situated Georgian house overlooking Ballinakill Bay, which has been lovingly converted into a first-class hotel with a Victorian style conservatory and delightful drawing rooms with open log fires. All of the bedrooms are individually decorated and feature fine antiques and paintings.

Set in 30 acres of secluded woodland on the ocean's edge, Rosleague is located just one mile from the Connemara National Park, an area of some 5,000 acres and just 5 minutes drive from Kylemore Abbey and its beautiful walled gardens.

Cuisine is based on the freshest and finest of ingredients, with local seafood and Connemara lamb a speciality.

**Sunday Independent** – *"As such, Rosleague Manor's Summer Eden is a hard stage to beat."*

**Tripadvisor** – *'Top 10 Best Small Hotels in Ireland.'*

**Georgina Campbell** – *Best of the Best.*

## Bedrooms 22

Listed Heritage Hotel ★ ★ ★ ★

### Rosleague Manor, Letterfrack, Connemara, Co. Galway

T +353 (0)95 41101  
info@rosleague.com  
www.rosleague.com

#### How to find:

N59, seven miles north west from Clifden.

#### GPS coordinates

N 53.5514  
W 9.9716

#### Proprietors: Edmund and Mark Foyle

Open from Easter to 1 November.  
B&B from €115 – €185 per person sharing.  
Single Supplement €35 – €45.  
2 Course Dinner €45 per person.  
5 Course Dinner €65 per person.  
Special Short Break Rates on Request.  
Dog Friendly.  
Exclusive Residential Wedding Parties 95 max.





Located in the heart of Ireland's Ancient East and the luscious Boyne Valley, The Station House Hotel offers an idyllic country escape, approximately 40km from Dublin city centre and Dublin airport.

Originally a railway junction built in 1862, the Slattery family purchased the property in 1981, and in 1984 opened Signal Restaurant and launched the hotel as a top culinary destination, and an award-winning weddings & events venue.

Set on 12 acres of manicured garden and woodland, the hotel offers elegant accommodation with all the charm of a boutique hotel, fine dining in Signal Restaurant, all day casual dining in The Platform Brasserie & Terrace, and exclusive weddings & events in The Carriage House for up to 190 guests.

Awards include: 2 Gold Medals (2023), 'Ireland's Country House & Guest-house Experience', and 'Ireland's Small Wedding Hotel', **Virgin Media Awards**. 'Book now, before the man from Michelin finds The Station House Hotel', **Lucinda O'Sullivan** (2023).

Boutique Venue of the Year (2023 & 2022), **weddingsuppliers.ie**.

Hotel Venue of the Year, Leinster (2022), **weddingsonline.ie**.

Bedrooms **19** including 2 suites

### The Station House Hotel Kilmessan, Co. Meath, C15 N40D, Ireland.

T +353 (0)46 902 5239  
info@stationhousehotel.ie  
www.stationhousehotel.ie  
@stationhh (Instagram),  
The Station House Hotel (Facebook).

#### Proprietors: The Slattery family

#### General Manager: Denise Slattery

Open 7 days a week from 3rd February – 3rd January, closed 25th & 26th December.  
B&B from €190 for 2 persons sharing.  
Dinner, B&B from €290 for 2 persons sharing.

Carriage House Rooms €190 – €260.

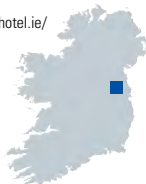
Suites €300 – €380 per night (mid-week)

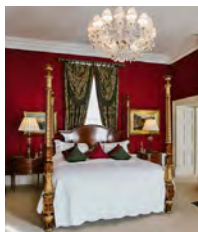
#### How to find:

Eircode C15 N40D; take M3 from Dublin to Navan, exit at junction 6 (for Dunshaughlin) and follow signs for Dunsany and Kilmessan; link to maps from main cities here  
<https://www.stationhousehotel.ie/location/>

#### GPS coordinates

53°33'50.4"N  
6°40'01.5"W  
(53.566766258423694,  
-6.658939401375257)





A stunning 18th century Georgian house set in 80 acres of magnificent parkland, woodland, courtyards, and walled gardens. Guests can experience genuine Irish hospitality whilst enjoying the luxury and true feel of the quintessential country house. Situated in the heart of the Boyne Valley in the heritage county of Meath. Part of Ireland's Ancient East, Tankardstown is just 45 minutes from Dublin City and 30 minutes from Dublin Airport.

Stay in a main house heritage bedroom, beautifully appointed courtyard cottage suite, the luxurious lodge, or the newly repurposed stables and barn bedrooms. Dog Friendly rooms are also available on request. Enjoy a casual lunch or a decadent fine dining dinner, with a choice of tasting menus, in the award winning Brabazon restaurant, or savour Tankardstown's traditional afternoon tea complete with home-baked goods.

Awards: **WeddingsOnline Awards 2023** Country House Venue of the Year.  
**YesChef Awards 2024** Country House Restaurant of the Year, Fine dining restaurant of the Year, Luxury Restaurant of the Year.

**RAI** Best Restaurant in Meath 2024.

Specialist Accommodation/Failte Ireland's  
Welcome Standard/Historic House

Bedrooms **33** 7 (main house)

### Tankardstown House, Nr. Slane, Rathkenny, Co.Meath

T +353 (0)41 982 4621  
info@tankardstown.ie  
www.tankardstown.ie

#### Proprietor: Brian & Trish Conroy

Open all year round.

Courtyard Cottages/Lodge/Stables/Barn: €290 per room.

Main House Heritage Bedroom: €395 per room.

Main House State Bedroom: €435 per room.

Library Suite: €795 per room.

Master Suite: €895 per room.

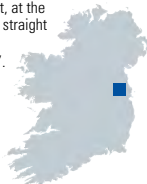
#### How to find:

From Dublin take the M1 motorway and exit at Junction 10. Follow the signs for Slane. Continue straight through the village on N51 — **or** — Take the N2 which will bring you directly into the village of Slane. Turn left at the traffic lights and continue through the village on N51. Come to main entrance gates to Slane Castle on your left. Directly opposite, turn right, at the fork **STAY LEFT**, and follow straight along this road for 4km. Signposted 'Tankardstown'.

#### GPS coordinates

N 53° 44' 27"

W 6° 36' 41"





Since Paul and Máire Flynn opened The Tannery in 1997, it has become one of the most original and welcoming experiences in Irish food. What makes it special? There is Paul's cooking, of course – his fresh Waterford ingredients, ever-changing menus and mouth-watering focus on local produce. There is its unique location in the seaside town of Dungarvan, a stone's throw from the Copper Coast and Comeragh Mountains. The Tannery is the ideal base to stay when exploring the beautiful Waterford Greenway. But most of all, there is the Tannery's knack for serving up that most important of ingredients: a great time.

Staying overnight in the Tannery Townhouse, the compact and cosy rooms in the heart of downtown Dungarvan completes the Tannery experience.

Awards Include:

**McKenna Guides** 100 Best 2024.

## Bedrooms 14

Faite Ireland Welcome Standard 2023

### **Tannery Restaurant, Townhouse and Cookery School, Dungarvan, Co. Waterford**

T +353 (0) 58 45420  
info@tannery.ie  
www.tannery.ie

#### **How to find:**

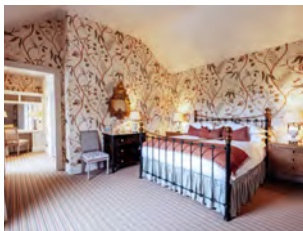
At end lower Main Street, beside Old Market House Building.  
For Tannery Townhouse, please check in at Tannery Restaurant.

#### **Proprietor: Paul and Máire Flynn**

Dinner Wed to Saturday 5.30 til 9pm.  
Lunch Sunday 12.30 til 3pm.  
Open for Dinner on Sunday Evenings, July, August and Bank Holiday Weekends.  
Closed for two weeks end January.

Dinner, B&B from €170 per person sharing.





An 18th century hunting estate set in 100 acres of beautiful countryside overlooking Lough Ramor. Truly a unique estate and former home of Lord Headfort and his wife, the Marchioness of Headfort.

The property has been brought back to life and into the Irish hands of Chef Richard Corrigan – one of the most established Irish chefs in the UK and beyond; also operating his London restaurants; Corrigan's Mayfair, Bentley's Oyster Bar & Grill in Piccadilly and Daffodil Mulligan in Old Street, which opened November 2019.

The stunning estate is a haven for walkers, fishermen, boaters and those simply looking to relax in serene beauty of the Irish countryside.

Awards include:

Richard has gained 2 **Michelin** Stars in his career along with winning 3 **AA** Restaurant of the Year Awards for his London restaurants.

**Georgina Campbell:** Country House of the Year 2018 and Best Breakfast Award for a County Hotel 2019.

**The Cateys:** 2018 Restaurateur of the Year.

**Bedrooms 23 Lodge rooms 12 Deerpark Shepherds Huts**

**Virginia Park Lodge**  
**Virginia, Co. Cavan, Ireland, A82 T2N6**  
 T +353 (0)49 854 6100  
[info@virginiaparklodge.com](mailto:info@virginiaparklodge.com)  
[www.virginiaparklodge.com](http://www.virginiaparklodge.com)

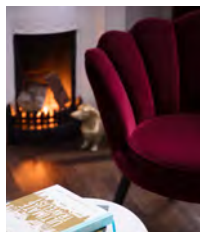
**Proprietor: Richard Corrigan**  
 Deerpark Shepherds Huts from €220.  
 Lodge Rooms & Suites from €265.  
 Available for private hire, please contact Virginia Park Lodge directly for all other availability.

**How to find:**  
 Coming from Virginia town, head northwest.  
 Take a slight left onto Ballyjamesduff Road.  
 Continue for 250 metres, then turn left.

**GPS coordinates**  
 Latitude: 53.834777  
 Longitude: -7.093105







There's an air of refinement and charming character to The Wilder Townhouse, in addition to the very desirable city centre address, just five minutes stroll from St. Stephen's Green.

All 42 guest rooms are distinctive, varying in size and with en-suite bathrooms with walk-in rainforest showers. There are four room categories, from the aptly named cosy Shoebox rooms and Small Doubles to the larger Townhouse Deluxe rooms and luxury Suites.

Delicious home-cooked breakfast is served daily featuring Irish artisan produce. In the evening, The Gin and Tea Rooms and stunning private terrace provide the perfect haven to relax and enjoy a drink.

Awards & Accolades:

**Irish Independent** "Fab 50" Places To Stay in Ireland.

**Sunday Times Travel** – Top 32 Best Places to Stay in Ireland.

**Forbes** – Top 10 Best Hotels in Dublin.

**Financial Times** – Favourite independent hotel in world's greatest cities.

## Bedrooms 42

**The Wilder Townhouse**  
**22 Adelaide Road, Dublin 2, D02 ET61**  
 T +353 1 9696598  
 stay@thewilder.ie  
 www.thewilder.ie  
 Instagram/Facebook "The Wilder Dublin"

**Proprietors: Frankie & Josephine Whelehan**  
**General Manager: Lukas Ochonski**  
 Opening:  
 Open All Year.  
 Closed for Christmas 23rd – 27th December.  
 Room Only Rates from €209.00.

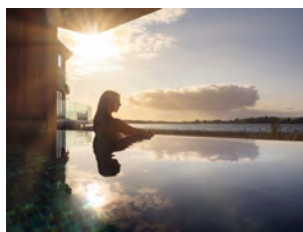
## How to find:

The Wilder is located at 22 Adelaide Road, on the corner of Harcourt Terrace.  
 From St Stephen's Green, travel south to end of Earlsfort Terrace and turn left onto Adelaide Rd.  
 From Leeson St, turn onto Adelaide Road, passing Royal Eye & Ear Hospital on right.

## GPS coordinates

53°19'57.1"N  
 6°15'27.1"W





Wineport Lodge is a luxury lakeshore lodge with a unique sense of cosiness and comfort at every turn. Nestled on the banks of Lough Ree, in a tranquil, waterside setting, the lodge is a back-to-nature bolthole, exceptional in style and casual luxury, in the centre of Ireland's Hidden Heartlands.

Completely relax your mind and body at Cedarwood Spa, an intimate spa sanctuary. Soak in the deep outdoor baths overlooking the lake, discover the Cedarwood Spa Infinity Pool and experience the floating hot tub pontoon.

Lough Ree is the perfect place to try a spot of paddleboarding or kayaking, both available to hire during your stay, bike rides, boat trips and country walks start right at the door. Glasson Village, with its traditional pubs, craft shop and gallery is just a short stroll away.

**Georgina Campbell Irish Food & Hospitality Awards 2023:** Bar of the Year – The Grapevine.

**Irish Tatler Spa Guide 2023:** Best New Boutique Spa.

**Irish Independent Reader Travel Awards 2022:** Ireland's Top 10 Hotels, Ireland's Best Breakfast, Ireland's Sexiest Bedrooms.

[Bedrooms / Suites 34](#) and a luxury cruiser

[Guesthouse ★ ★ ★ ★](#)

**Wineport Lodge, Glasson,  
Athlone, Co. Westmeath N37 R2D7**

T +353 (0)90 643 9010

[lodge@wineport.ie](mailto:lodge@wineport.ie)

[www.wineport.ie](http://www.wineport.ie)

**Proprietors: Ray Byrne and Jane English**

Open all year round.

Closed 23 – 26 December (2025).

Rooms from €250 B&B.

Suites from €325 B&B.

Afternoon Tea from €40pp.

All Day Dining Menu.

A La Carte Dinner Menu.

**How to find:**

Take exit 10 off M6/N6 Dublin-Galway.

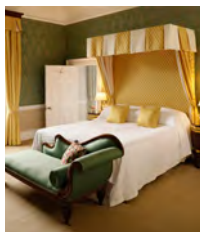
Follow N55 direction Cavan. At Ballykeeran fork left at Dog & Duck pub. Then 1.6 kilometres (1 mile) on left hand side.

**GPS coordinates**

N 53.465161

W -7.884579





Imagine having a vacation or a special celebration in your own historic country house with the option of a private chef!

In the stunning north west of Ireland, on the Wild Atlantic Way, is a luxurious 18th century mansion set in a private 500 acre estate. Huge, sumptuous beds, log fires, views from every window. A river runs through the property, the wildlife is prolific and there is a tennis court, falconry, croquet and a snooker room on the estate.

Within a 30 minute drive experience the landscape of WB Yeats: Links golf, hiking, kayak, clay shooting, surf beaches and local festivals.

**John & Sally McKenna's** 100 Best Places to Stay.

**Sunday Telegraph** Best 3 Irish Country Houses.

**Michelin Guide.**

**Conde Nast** Traveller Ireland's 5 Best Country Houses.

Bedrooms / Suites **8** (sleeping up to 16 guests)

#### **Coopershill House, Riverstown**

**Co. Sligo, F52 EC52**

T +353 (0)86 318 2028

ohara@coopershill.com

www.coopershill.com

#### **Proprietors: The O'Hara Family**

Open March to the end of November.

The property is exclusive use and so your group will have the mansion to yourselves.

Private catering and housekeeping available on request.

Minimum stay 2 nights from €1,500 per night.

Discount for longer stays.

No weddings.

#### **How to find:**

20 minutes east of Sligo town.

45 minutes from Ireland West Knock airport.

2.5 hours from Dublin airport.

#### **GPS coordinates**

N 54.1381

W 8.4154





10 minutes from vibrant Clonakilty town, Dunowen House is a luxury 18th Century private rental property. Located on the Wild Atlantic Way, it is surrounded by stunning landscapes, private coves and beaches, offering guests the chance to totally experience magical West Cork.

Carefully restored, the house showcases its unique rock & roll heritage, as the former home of Noel Redding, bassist with the Jimi Hendrix Experience. A music room is dedicated to memorabilia, vintage posters and music magazines.

When you stay, the entire house is yours exclusively – ideal for vacations, celebrations, events and intimate weddings. Dunowen offers the comforts of a luxury small hotel with the privacy of a country estate. Private Chef available.

Awards:

**John & Sally McKenna's Guide** – Best Places to Stay.

**The Independent Reader Travel Awards** – Best Small Stays.

**The Gloss** – Best self-catering properties, Ireland.

Main House **6 suites**, max 15 guests.

Orchard Cottage, **2 double, 1 single**, max 5 guests.

### Dunowen House

**Ardfield, Clonakilty, Co. Cork P85 DX25**

T +353 (0)23 886 9099

info@dunowenhouse.ie

www.dunowenhouse.ie

### Proprietors: Kela & Stephen Hodgins

Open: All year round (serviced self-catering).

Min Stay 2 nights, except June – August 7 nights.

Private Catering available on request.

2 night self-catering weekend from €3,000.

Weekly rates:

Low season: From €4,500.

High season: From €5,500.

Christmas, New Year, Easter: From €6,000.

For weddings, celebrations, corporate or wellness events, please contact us for rates.

### How to find:

We are located outside Ardfield Village, 9km from Clonakilty.

From Cork Airport – 50 mins.

From Dublin Airport – 3.5 hours.

From Shannon Airport – 2.5 hours.

### GPS coordinates

51.556038

-8.905305





The Shannon Princess is a luxury boutique hotel barge cruising the river Shannon in Ireland. Family run and with a professional crew, the Shannon Princess is the perfect way to explore what the river and her loughs have to offer. Guests on board will enjoy all the indulgent comforts of their own private floating luxury hotel, an unforgettable experience that will create memories forever.

Cruises are of a 6 night / 7 day duration, which can be booked by the cabin or as an exclusive Charter for up to 10 guests. Itinerary choices include Classic, Walking, Golf and Family Cruises. On board contemporary luxury seamlessly blends with a welcoming atmosphere and casual informality. Deluxe accommodations include Air Conditioning, a deck side Spa pool and delicious cuisine and wines.

### Bedrooms 5 ensuite cabins

#### Shannon Princess, Glasson, Athlone, Co. Westmeath

T +353 (0)87 2514809  
info@shannonprincess.com  
www.shannonprincess.com

#### Proprietor: The Gibbons Family

Low Season Rates: April 23rd to May 7th 2025

Suite (per person, double occupancy)	\$4,850
Suite Single Supplement	\$1,680
Charter for 10	\$46,000
Charter for 8	\$43,700
Charter for 6	\$41,300

High Season Rates: May 14th to September 24th 2025

Suite (per person, double occupancy)	\$5,650
Suite Single Supplement	\$1,900
Charter for 10	\$52,000
Charter for 8	\$49,000
Charter for 6	\$46,000

#### How to find:

Departures are from Glasson, Athlone to Killaloe and every second week from Killaloe to Glasson.







Nestled in Kilkenny's Sliabhardagh Hills, Tubbrid Castle blends modern touches with the authentic experience of staying at a 15th-century tower house. After waking in a four-poster bed under a vaulted stone ceiling, guests can look forward to relaxing in a deep, bubbly bath and sipping their morning coffee ensconced in an original window seat, while watching out for foxes and deer from the nearby woodland. In the evening, use the Great Hall's fully-equipped kitchen and oak banquet table to feast like a king, before retiring to enjoy the log-fired stove, where the original fireplace is inscribed '1596'.

**The New York Times** "An Irish castle to call your own."

**Forbes** "A magical experience."

**The Irish Times** "A glorious getaway."

**Irish Independent** Fab 50 Places to Stay. "The rooms are incredible."

**Irish Georgian Society** Conservation Awards: "A superlative example of sensitive restoration; one of Ireland's great tower houses."

## Bedrooms 3 (sleeping up to 8 guests)

### Tubbrid Castle, Barna, Co Kilkenny, E41 AE93.

john@tubbridcastle.com  
www.tubbridcastle.com

#### Proprietor: John Campion

Tubbrid Castle is open all year round. The property is exclusive-use, so your group will have the whole castle to yourselves. The castle costs from €725 per night and there is a two-night minimum stay.

#### How to find:

We are 25 mins from Kilkenny City and 1h 30 mins from Dublin and Cork. From M8 Junction 4 (Urlingford) follow signs for Kilkenny until Woodsgift Service Station (5km). Turn right (signs for Tullaroan/Kilmanagh) and drive through the cross-roads after 2km. Take the next left and Tubbrid Castle is on the right after 1km.





## GIFT VOUCHER

---

### DIGITAL GIFT VOUCHER

Delivered instantly by email.  
Sustainable, paperless and easily accessible.

### PHYSICAL GIFT VOUCHER

Post to an address of your choice, packaged in  
our beautiful, branded gift pack and gift bag.

---



### TO ORDER AN IRELAND'S BLUE BOOK GIFT VOUCHER

Please visit [www.irelandsbluebook.com](http://www.irelandsbluebook.com)  
or call +353 (0)1 676 9914

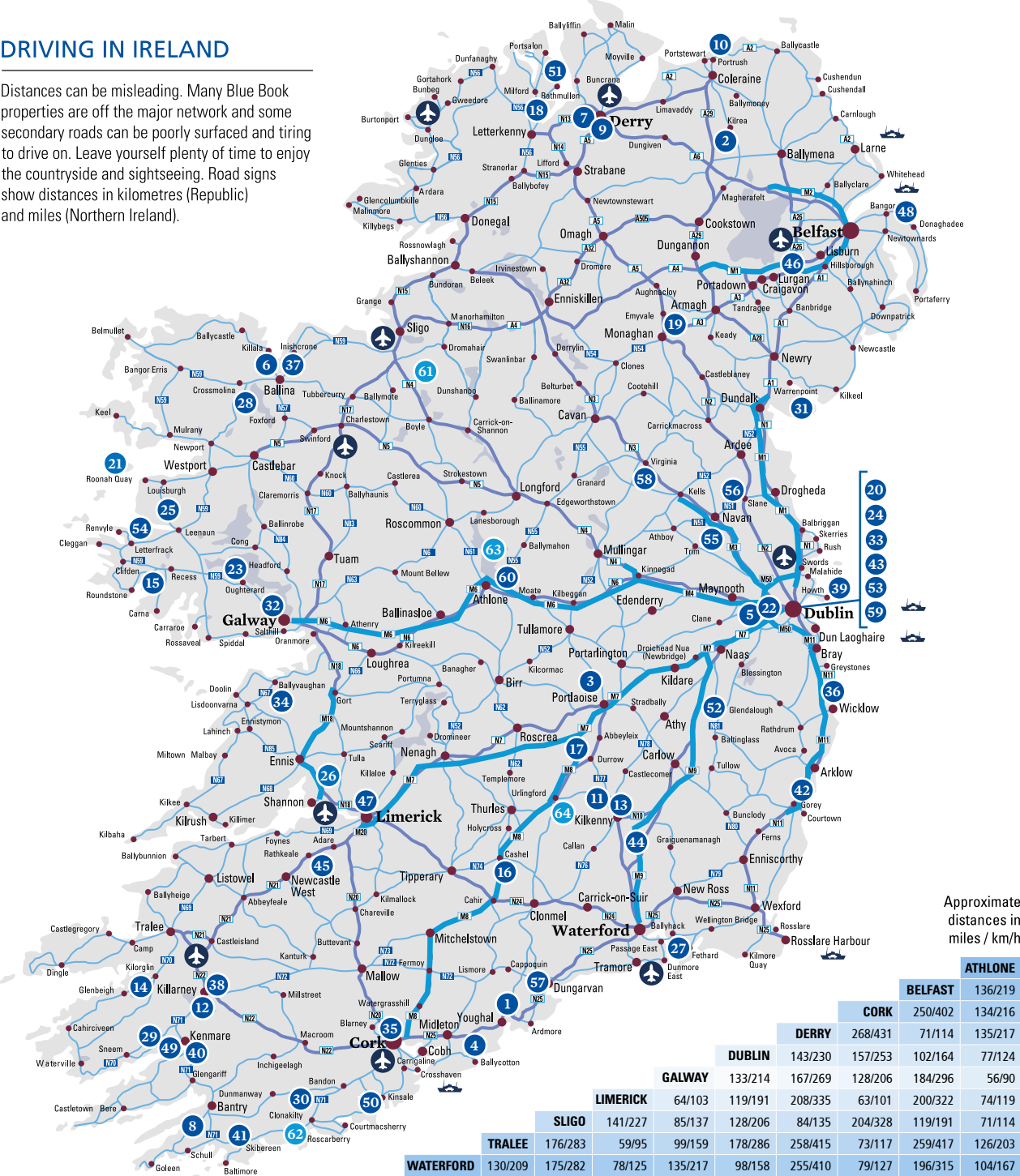
Each house or restaurant has a reference number which relates to both the map opposite and the page on which it appears.

- 1. Aherne's Townhouse**  
Tel: +353 (0)24 92424  
E-mail: info@ahernes.net
- 2. Ardtara Country House**  
Tel: +44 (0)28 796 44490  
From Republic: 048 796 44490  
E-mail: info@ardtara.com
- 3. Ballyfin Demesne**  
Tel: +353 (0)57 875 5866  
E-mail: reservations@ballyfin.com
- 4. Ballymaloe House Hotel**  
Tel: +353 (0)21 465 2531  
E-mail: info@ballymaloe.ie
- 5. Barberstown Castle**  
Tel: +353 (0)1 628 8157  
E-mail: info@barberstowncastle.ie
- 6. Belleek Castle**  
Tel: +353 (0) 96 22 400  
E-mail: info@belleekcastle.eu
- 7. Bishop's Gate Hotel**  
Tel: +44 (0)28 711 40300  
From Republic: 048 711 40300  
E-mail: sales@bishopsgatehotelderry.com
- 8. Blairscove House**  
Tel: +353 (0)27 61127  
E-mail: mail@blairscove.ie
- 9. Browns Bonds Hill**  
Tel: +44(0)28 7134 5180  
E-mail: eat@brownsrestaurant.com
- 10. The Bushmills Inn**  
Tel: +44 (0)28 207 33000  
From Republic: 048 207 33000  
E-mail: info@bushmillsinn.com
- 11. Butler House**  
Tel: +353 (0)56 7722828  
E-mail: res@butler.ie
- 12. Cahernane House Hotel**  
Tel: +353 (0)64 663 1895  
E-mail: info@cahernane.com
- 13. Campagne Restaurant**  
Tel: +353 (0)56 777 2858  
E-mail: info@campagne.ie
- 14. Carrig Country House**  
Tel: +353 (0)66 976 9100  
E-mail: info@carrighouse.com
- 15. Cashel House Hotel**  
Tel: +353 (0)95 31001  
E-mail: sales@cashelhouse.ie
- 16. Cashel Palace Hotel**  
Tel: +353 (0)62 62002  
E-mail: reservations@cashelpalacehotel.ie
- 17. Castle Durrow**  
Tel: +353 (0)57 873 6555  
E-mail: reservations@castledurrow.com
- 18. Castle Grove Country House**  
Tel: +353 (0)74 91 51118  
E-mail: stay@castlegrove.com
- 19. Castle Leslie Estate**  
Tel: +353 (0)47 88100  
E-mail: info@castlesleslie.com
- 20. Chapter One**  
Tel: +353 (0)1 873 2266  
E-mail: info@chapteronerestaurant.com
- 21. Clare Island Lighthouse**  
Tel: +353 (0)87 668 9758  
E-mail: info@clareislandlighthouse.com
- 22. Cliff at Lyons**  
Tel: +353 (0)1 630 3500  
E-mail: reception@cliffatlyons.ie
- 23. Currarevagh House**  
Tel: +353 (0)91 552312  
E-mail: rooms@currarevagh.com
- 24. Dax Restaurant**  
Tel: +353 (0) 1 676 1494  
E-mail: olivier@dax.ie
- 25. Delphi Lodge**  
Tel: +353 (0) 954 2222  
E-mail: info@delphilodge.ie
- 26. Dromoland Castle**  
Tel: +353 (0) 61 368144  
E-mail: Reservations@dromoland.ie
- 27. Dunbrody House**  
Tel: +353 (0)51 389600  
E-mail: info@dunbrodyhouse.com
- 28. Enniscoe House**  
Tel: +353 (0)96 31112  
E-mail: mail@enniscoe.com
- 29. The Estate at Dromquinna**  
Tel: +353 (0)64 66 42888  
E-mail: admin@dromquinnamanor.com
- 30. Fernhill House & Gardens**  
Tel: +353 (0)23 883 3258  
E-mail: info@fernhillhousehotel.com
- 31. Ghan House**  
Tel: +353 (0)42 937 3682  
E-mail: info@ghanhouse.com
- 32. Glenlo Abbey Hotel & Estate**  
Tel: +353 (0)91 519600  
E-mail: stay@glenloabbey.ie
- 33. Glovers Alley by Andy McFadden**  
Tel: +353 (0)1 244 0733  
E-mail: info@gloversalley.com
- 34. Gregans Castle Hotel**  
Tel: +353 (0)65 707 7005  
E-mail: stay@gregans.ie
- 35. Hayfield Manor**  
Tel: +353 (0)21 484 5900  
E-mail: enquiries@hayfieldmanor.ie
- 36. Hunter's Hotel**  
Tel: +353 (0)404 40106  
E-mail: reception@hunters.ie
- 37. Ice House**  
Tel: +353 (0)96 23500  
E-mail: chill@theicehouse.ie
- 38. Killarney Royal**  
Tel: +353 (0)64 6631853  
E-mail: reception@killarneyroyal.ie
- 39. King Sitric**  
Tel: +353 (0)1 832 5235  
E-mail: reservations@kingsitric.ie
- 40. The Lansdowne Kenmare**  
Tel: +353 (0)64 6640 200  
E-mail: info@lansdownekenmare.com
- 41. Liss Ard Estate**  
Tel: +353 (0)28 40000  
E-mail: reservations@lissard.com
- 42. Marlfield House**  
Tel: +353 (0)53 94 21124  
E-mail: info@marlfieldhouse.ie
- 43. The Merriion Hotel**  
Tel: +353 (0)1 603 0600  
E-mail: info@merriionhotel.com
- 44. Mount Juliet Estate**  
Tel: +353 (0)56 777 3000  
E-mail: reservations@mountjuliet.ie
- 45. The Mustard Seed**  
Tel: +353 (0)69 68508  
E-mail: info@mustardseed.ie
- 46. Newforge House**  
Tel: +44 (0)28 926 11255  
From Republic: 048 926 11255  
E-mail: enquiries@newforgehouse.com
- 47. No. 1 Pery Square**  
Tel: +353 (0)61 402402  
E-mail: info@oneperysquare.com
- 48. The Old Inn**  
Tel: +44 (0)28 9185 3255  
E-mail: reservations@theoldinn.com
- 49. Park Hotel Kenmare**  
Tel: +353 (0)64 664 1200  
E-mail: info@parkkenmare.com
- 50. Perryville House**  
Tel: +353 (0)21 477 2731  
E-mail: sales@perryvillehouse.com
- 51. Rathmullan House**  
Tel: +353 (0)74 915 8188  
E-mail: reception@rathmullanhouse.com
- 52. Rathsallagh House**  
Tel: +353 (0)45 403112  
E-mail: info@rathsallagh.com
- 53. Restaurant Patrick Guilbaud**  
Tel: +353 (0)1 6764 192  
E-mail: info@restaurantpatrickguilbaud.ie
- 54. Rosleague Manor**  
Tel: +353 (0)95 41101  
E-mail: info@rosleague.com
- 55. The Station House Hotel**  
Tel: +353 (0)46 902 5239  
E-mail: info@stationhousehotel.ie
- 56. Tankardstown House**  
Tel: +353 (0)41 982 4621  
E-mail: info@tankardstown.ie
- 57. The Tannery**  
Tel: +353 (0) 58 45420  
E-mail: info@tannery.ie
- 58. Virginia Park Lodge**  
Tel: +353 (0)49 854 6100  
E-mail: info@virginiaparklodge.com
- 59. The Wilder Townhouse**  
Tel: +353 (0)1 969 6598  
E-mail: stay@thewilder.ie
- 60. Wineport Lodge**  
Tel: +353 (0)90 643 9010  
E-mail: lodge@wineport.ie

- 
- 61. Coopershill House**  
Tel: +353 (0)86 318 2028  
E-mail: ohara@coopershill.com
  - 62. Dunowen House**  
Tel: +353 (0)23 886 9099  
E-mail: info@dunowenhouse.ie
  - 63. Shannon Princess**  
Tel: +353 (0)87 2514809  
E-mail: info@shannonprincess.com
  - 64. Tubbrid Castle**  
E-mail: john@tubbridcastle.com

# DRIVING IN IRELAND

Distances can be misleading. Many Blue Book properties are off the major network and some secondary roads can be poorly surfaced and tiring to drive on. Leave yourself plenty of time to enjoy the countryside and sightseeing. Road signs show distances in kilometres (Republic) and miles (Northern Ireland).



The above map indicates members locations. We recommend that a current road map of Ireland is consulted before embarking on your journey.

Ireland's Blue Book is a collection of Irish Country House Hotels, Manor Houses, Castles and Restaurants. Located throughout the island of Ireland these charming boutique hotels are some of the most stylish and unique places to stay in the country.

## HOW TO BOOK

Reservations may be made either with the properties directly, online with [www.irelandsbluebook.com](http://www.irelandsbluebook.com) or through your travel agent. At the bottom of each page you will find the proprietor's name, address, website, email and telephone. The prices quoted are in euro for the Republic of Ireland and sterling for Northern Ireland. The rates are for Bed and Full Breakfast per person based upon two people sharing a double/twin bedded room with bath/shower. Some properties have single supplements. Rates range from the minimum to the maximum in low and high season.

In some cases the rates may not apply during special occasions such as public holiday weekends, major festivals and international events. In all cases it is advisable to verify in advance the rates applicable to your reservation.

## CORRESPONDENCE / ENQUIRIES

Ireland's Blue Book  
63 Fitzwilliam Square, Dublin 2,  
Ireland D02N938

+353(0)1 6769914  
mail@irelandsbluebook.com  
[irelandsbluebook.com](http://irelandsbluebook.com)

## RESERVATION / CANCELLATION

Each member has its own individual reservation and cancellation policy. Also check that your travel insurance provides cover against cancellation charges.

## DISCLAIMER

Whilst every care has been taken in the compilation of the booklet, the publishers cannot accept responsibility for errors or omissions. Where errors or omissions occur and are brought to our attention, they will be corrected in future revisions of the booklet.



[Irelandsbluebook.com](http://Irelandsbluebook.com)

Published by  
Ireland's Blue Book  
63 Fitzwilliam Square, Dublin 2  
Ireland D02N938  
+353(0)1 6769914  
mail@irelandsbluebook.com

ISBN 978-1-9162152-5-2

